

KOLA UNIT NO. 1
WATERFLOOD EOR PROJECT
ANNUAL REPORT FOR 2011

March 7, 2012
Tundra Oil and Gas Partnership

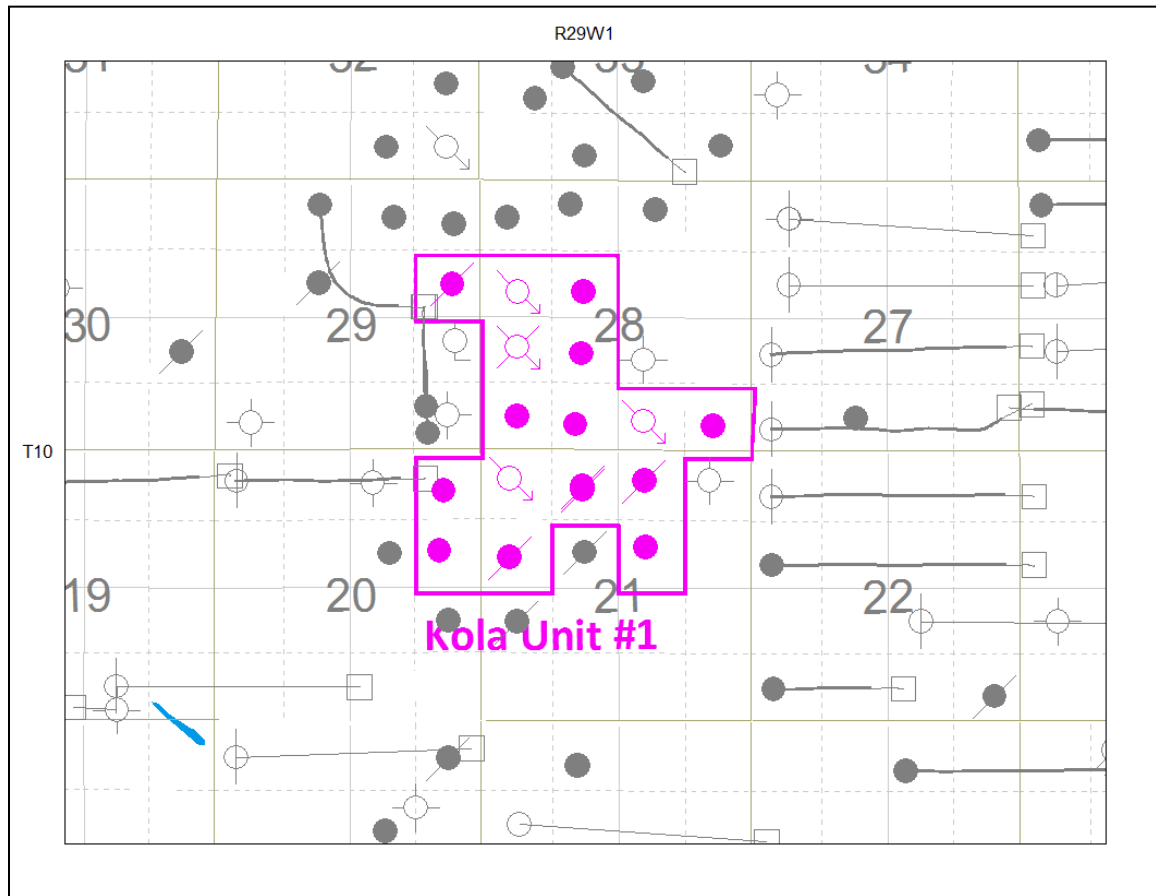
Table of Contents

INTRODUCTION	3
DISCUSSION.....	3
Production History	3
Waterflood History	5
Waterflood EOR Operating Strategy and Performance	5
Water Source and Quality	5
Injection Wellhead Pressures.....	6
Reservoir Pressure	6
Well Servicing	6
Voidage Replacement.....	6
Waterflood Performance Discussion	6
List of Appendices.....	7
Appendix A: Well Name and Well Status	
Appendix B: Monthly Injection Wellhead Pressures Table and Plots	
Appendix C: Kola Unit No. 1 Injection Pattern Summary	
Appendix D: Injector Pattern Production/Injection Rates, Cumulative and VRRs, Plots and Tables	

INTRODUCTION

Kola Unit No. 1 Enhanced Oil Recovery (EOR) Waterflood Project was approved under Board Order No. PM 71 effective October 1, 1993 with Tundra Oil and Gas Ltd. as Operator. The EOR project area contains 17 wells in 16 LSDs in Township 10, Range 29 W1 as shown in the figure below. Well list and well status is available in Appendix A.

Figure 1: Kola Unit No. 1 Area Outline



In accordance with Section 73 of the Manitoba Drilling and Production Regulation, Tundra hereby submits the 2011 Annual Progress Report for Kola Unit No. 1 as required by Board Order No. PM 71.

DISCUSSION

Production History

For the wells included in Kola Unit No. 1, production started in October 1985 with 00/13-21-010-29W1/0 well. Oil production peaked at 41.5 m³/d in February 1988. The unit was producing 3.68 m³/d of oil and 38.5 m³/d of water, in December 2011. The average WOR in 2011 was 10.6 m³/m³. Oil production rate, injection rate, and WOR

during each month for each injection pattern and for whole project are presented in Appendix D. The rates and WOR are plotted in Figure 2.

Figure 2: Kola Unit No. 1 Production/Injection Rates and WOR vs Time

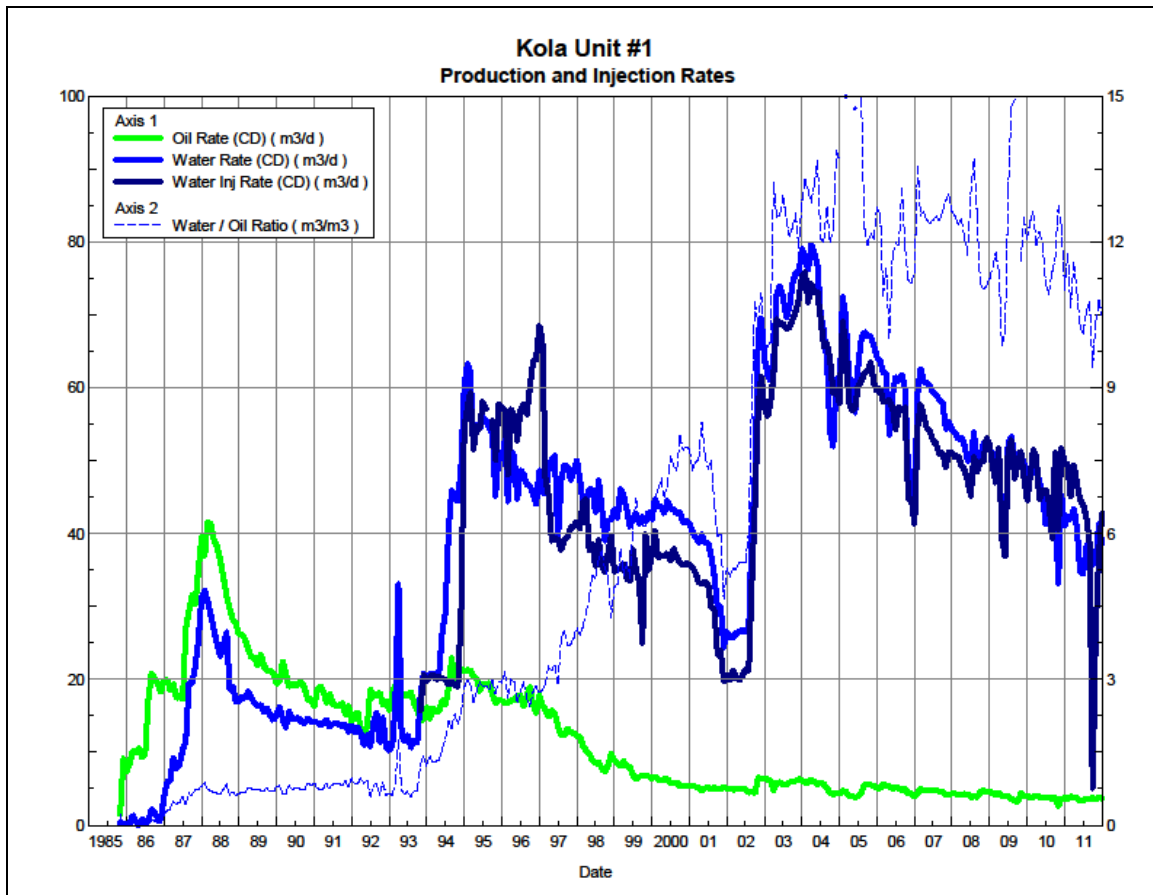
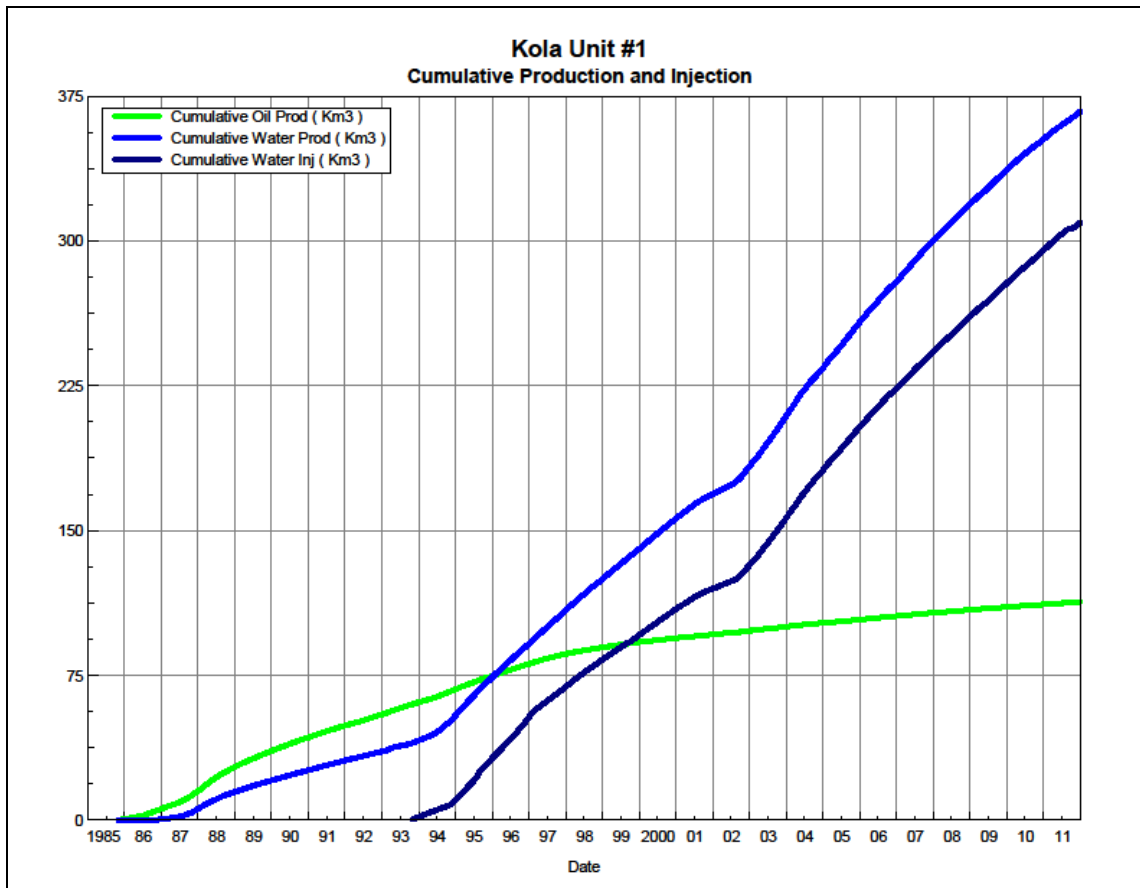


Figure 3 shows the cumulative production for Kola Unit No. 1 to the end of December 2011 as 113 E³m³ of oil, and 367 E³m³ of water. Cumulative water injected is just under 310 E³m³. Original Oil In Place (OOIP) of Kola Unit No. 1 is estimated at 1547 E³m³. At the end of 2011, recovery factor of Kola Unit No. 1 was 7.3%. The cumulative volume of oil, and water produced and fluid injected for each injection pattern and for the whole project for each injection well is presented in Appendix D.

Figure 3: Kola Unit No. 1 Cumulative Oil, Water and Water Injected vs. Time



Waterflood History

As of December 2011 the Unit has 3 active vertical injectors and 3 injector patterns in place. Water injection started in October 1993. An overall summary for each injector pattern is presented in Appendix B.

Any future revisions to the waterflood development or surveillance plan would be based on new production or performance response data, technical studies, or observed reservoir behavior and reserves recovery interpretations.

Waterflood EOR Operating Strategy and Performance

Water Source and Quality

Injected fluid consists of water producing from the Lodgepole formation, from the unit and surrounding area. Water is filtered to 25 microns prior to re-injection.

Injection Wellhead Pressures

The Average monthly wellhead injection pressures for each injection well are summarized in Appendix C, and shows all injection pressure since 2003. Average injection pressure in 2011 for 00/12-28-010-29-010-29W1 was 5300 kPag, 8000 kPag for injector 00/13-21-010-39W and 4900 kPag for 00/02-28-010-29W1.

Reservoir Pressure

No reservoir pressure measurements were taken at Kola Unit No. 1, in 2011.

Well Servicing

The following table summarizes the well servicing performed within Kola Unit No. 1 during 2011:

Table 1: Kola Unit #1 Well Servicing

00/16-20-010-29W1/0	Repairs (Tubing Leak)	7/20/2011
00/01-28-010-29W1/0	Pump Change & Repairs (Tubing Leak)	10/25/2011

Voidage Replacement

Cumulative voidage for the Kola Unit No. 1 was 0.775 in December 2011. As of 1997, monthly voidage is significantly greater than 1, which puts the Kola Unit No. 1 on track to achieve a cumulative VRR of 1. Calculation, plots and tables of the Voidage replacement ratio on a monthly and cumulative basis for each injection pattern and for the project area are presented in Appendix D.

Waterflood Performance Discussion

The OOIP of Kola Unit No. 1 is estimated at 1547 E³m³. The recovery factor of Kola Unit No. 1 was 7.3% based on 113 E³m³ of cumulative oil recovered to the end of 2011. The ultimate expected recoverable reserve based on decline analysis is 127 E³m³ or an ultimate recovery factor of 8.2%.

The overall performance of this waterflood has been poor as indicated by low recovery factors, and poor waterflood response. Any increased or supported oil rates, that may be as a result of injected water sweeping the reservoir, are not sustained for a very long time.

Trends in production are very stable and at a mature state. No changes are anticipated in the future trends. While overall cumulative voidage is above unity, an examination of the individual patterns reveals that injected water should be diverted from the 12-28 pattern to the 13-21 and 7-28 patterns, which are under-injected. There is the possibility of an additional injector well to improve sweep efficiency in an area of the reservoir with no waterflood response, and even additional development is possible.

Optimization of the waterflood will be evaluated to inject water in under-supported areas of the pool, with consideration for additional injection. Also, facility enhancements in the area may increase water handling capacity so that sufficient water volumes can be provided to the pool.

List of Appendices

Appendix A: Well Name and Well Status

Appendix B: Monthly Injection Wellhead Pressures Table and Plots

Appendix C: Kola Unit No. 1 Injection Pattern Summary

Appendix D: Injector Pattern Production/Injection Rates, Cumulative and VRRs

Plots and Tables for the following injectors:

00/13-21-010-29W1

00/02-28-010-29W1

00/12-28-010-29W1

Appendix A

UWI	Well Status
100/09-20-010-29W1/00	Capable of OIL Prod
100/16-20-010-29W1/00	Capable of OIL Prod
100/10-21-010-29W1/00	Capable of OIL Prod
100/12-21-010-29W1/00	ABD Producer
100/13-21-010-29W1/00	WTR Injection
100/14-21-010-29W1/00	ABD Producer
100/14-21-010-29W1/02	ABD Producer
100/15-21-010-29W1/00	ABD Producer
100/01-28-010-29W1/00	Capable of OIL Prod
100/02-28-010-29W1/00	WTR Injection
100/03-28-010-29W1/00	Capable of OIL Prod
100/04-28-010-29W1/00	Capable of OIL Prod
100/05-28-010-29W1/00	ABD WTR Injection
100/06-28-010-29W1/00	Capable of OIL Prod
100/11-28-010-29W1/00	Capable of OIL Prod
100/12-28-010-29W1/00	WTR Injection
100/09-29-010-29W1/00	ABD Producer

Appendix B

Kola Unit No. 1 Pattern Summary as of December 2011

Pattern Name	Injector Location (010-29W)	Injector Surf. Location (010-29W1)	Status	No. of Support ed Wells	Supported Wells (010-29W1)	Allocatio n Factor	Pattern Prod Start Month	Inj Start Month	Oil Rate (m³/d)	Water Rate (m³/d)	WOR (m³/m³)	Water Injection (m³/d)	Cum Oil (E³m³)	Cum Water (E³m³)	Cum Inj Water (E³m³)	Monthly VRR	Cum VRR
00/13-21-010-29W1 Injector	00/13-21	Vertical Well	WTR Injection	7	09-20, 16-20, 12-21, 04-28	1	Oct 1985	Oct 1993	2.0	18.3	9.37	6.6	58.4	126.8	72.7	0.3	0.51
					14-21, 14-21/2, 03-28	0.5											
00/02-28-010-29W1 Injector	00/02-28	Vertical Well	WTR Injection	6	10-21, 15-21 , 01-28	1	Jun 1987	Aug 1995	0.9	13.5	14.69	6.7	27.5	155.7	59.6	0.5	0.36
					03-28, 14-21, 14-21/2	0.5											
00/12-28-010-29W1 Injector	00/12-28	Vertical Well	WTR Injection	4	05-28, 06-28, 11-28, 09-29	1	Dec 1986	Nov 1994	0.8	6.7	8.33	29.5	27.3	84.6	177.4	4.3	1.92

Appendix C

Average Monthly Injection Pressure (kPag)

Injection Pressure					Injection Pressure					Injection Pressure				
Month	100/13-21	100/02-28	100/05-28	100/12-28	Month	100/13-21	100/02-28	100/05-28	100/12-28	Month	100/13-21	100/02-28	100/05-28	100/12-28
Aug-02	5996	5773	234	2178	Jan-06	11035	10200	2829	6500	Jan-10	6296	11490	-	6239
Sep-02	10934	7810	426	5108	Feb-06	10896	10534	2682	6538	Feb-10	9941	11079	-	6161
Oct-02	10934	7810	3013	5600	Mar-06	10600	11148	2650	6416	Mar-10	8703	11397	-	6315
Nov-02	10934	7810	4071	5600	Apr-06	10777	9910	2682	6322	Apr-10	5060	11479	-	6357
Dec-02	10934	7810	4071	5600	May-06	10884	10540	3152	6342	May-10	2483	11232	-	6397
Jan-03	10366	8490	2919	6206	Jun-06	10840	10733	1133	6382	Jun-10	6230	11182	-	6040
Feb-03	9905	9697	2840	6147	Jul-06	10794	10890	1	6581	Jul-10	6800	10052	-	5787
Mar-03	9745	9752	2840	6096	Aug-06	10778	10834	404	6479	Aug-10	7107	9611	-	5666
Apr-03	9735	9062	3053	6107	Sep-06	10801	10750	2850	6520	Sep-10	8860	8510	-	5754
May-03	10355	8706	3550	6036	Oct-06	10801	2416	3000	6578	Oct-10	8242	8978	-	5727
Jun-03	10366	8520	3550	6035	Nov-06	10867	2280	100	6601	Nov-10	8897	8954	-	5704
Jul-03	10366	8520	3550	6035	Dec-06	10900	1626	0	6745	Dec-10	8977	9239	-	5800
Aug-03	10366	8520	3550	6035	Jan-07	9689	5105	1078	6821	Jan-11	7493	8234	-	5789
Sep-03	10345	8921	3268	6019	Feb-07	10370	9443	0	6731	Feb-11	8257	7477	-	5784
Oct-03	10274	10240	2138	5965	Mar-07	10452	9923	0	6323	Mar-11	8963	6076	-	5869
Nov-03	10274	10240	2138	5965	Apr-07	10410	10350	1	6247	Apr-11	9000	6000	-	5900
Dec-03	10274	10240	2138	5965	May-07	10500	10300	1	6201	May-11	7627	3517	-	5816
Jan-04	10274	10240	2138	5965	Jun-07	10500	10300	1	6201	Jun-11	7943	4107	-	5767
Feb-04	10274	10240	2138	5965	Jul-07	9871	10523	1	6307	Jul-11	8387	4806	-	5806
Mar-04	10274	10240	2138	5965	Aug-07	9000	10601	1	6300	Aug-11	8200	4900	-	5981
Apr-04	10274	10240	2138	5965	Sep-07	9580	10600	0	6397	Sep-11	6578	3467	-	0
May-04	10274	10240	2138	5965	Oct-07	9600	10600	0	6400	Oct-11	7619	3465	-	5213
Jun-04	10274	10240	2138	5965	Nov-07	8940	10820	0	6401	Nov-11	8000	3600	-	5800
Jul-04	10274	10240	2138	5965	Dec-07	8832	11103	-	6503	Dec-11	8000	3600	-	5800
Aug-04	10274	10240	2138	5965	Jan-08	8300	11200	-	6600					
Sep-04	10274	10957	3430	6304	Feb-08	8345	11111	-	6455					
Oct-04	10040	11100	3377	6340	Mar-08	8400	11000	-	5803					
Nov-04	10200	11100	3600	6600	Apr-08	7960	11107	-	6527					
Dec-04	10200	11100	3600	6600	May-08	7990	11190	-	6790					
Jan-05	10200	11100	3600	6600	Jun-08	8000	11200	-	6800					
Feb-05	10386	11100	3229	6600	Jul-08	8645	11265	-	6800					
Mar-05	10600	11100	2800	6600	Aug-08	8710	11087	-	6539					
Apr-05	10600	11100	2800	6600	Sep-08	7560	10967	-	4247					
May-05	10600	11100	2800	6600	Oct-08	7700	11200	-	4000					
Jun-05	10013	11103	3040	6573	Nov-08	7967	11300	-	4680					
Jul-05	9052	10986	3300	7262	Dec-08	8200	11400	-	5200					
Aug-05	9781	10835	2700	6232	Jan-09	8200	11400	-	5200					
Sep-05	9920	11033	2813	6067	Feb-09	8200	11400	-	5200					
Oct-05	9800	11200	3700	6400	Mar-09	8200	11516	-	5200					
Nov-05	9920	11100	3620	6410	Apr-09	8200	11800	-	5200					
Dec-05	11000	10200	2900	6500	May-09	8200	11800	-	5362					
					Jun-09	8187	10254	-	5410					
					Jul-09	7801	10401	-	5701					
					Aug-09	7800	6391	-	5700					
					Sep-09	7800	6200	-	5700					
					Oct-09	8003	9171	-	5826					
					Nov-09	8410	11633	-	6274					
					Dec-09	50	11717	-	6301					

Appendix D
Rates and VRR
Plots and Tables

Pattern: 13-21-010-29 Set: Kola Unit #1

Oil Formation Vol. Factor : 1.05 m3/m3

Water Formation Vol Factor : 1.00 m3/m3

Water / Oil Ratio : 9.37 m3/m3

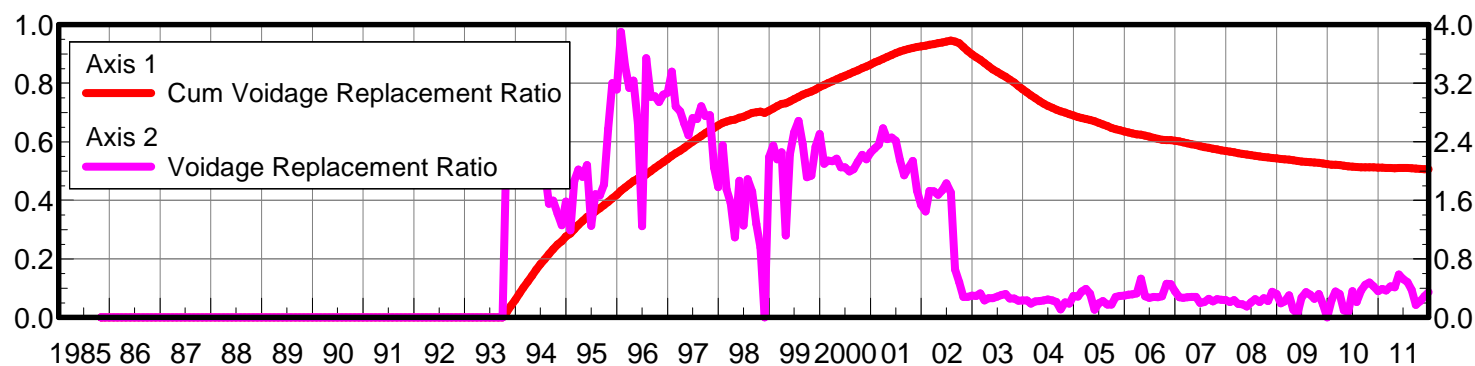
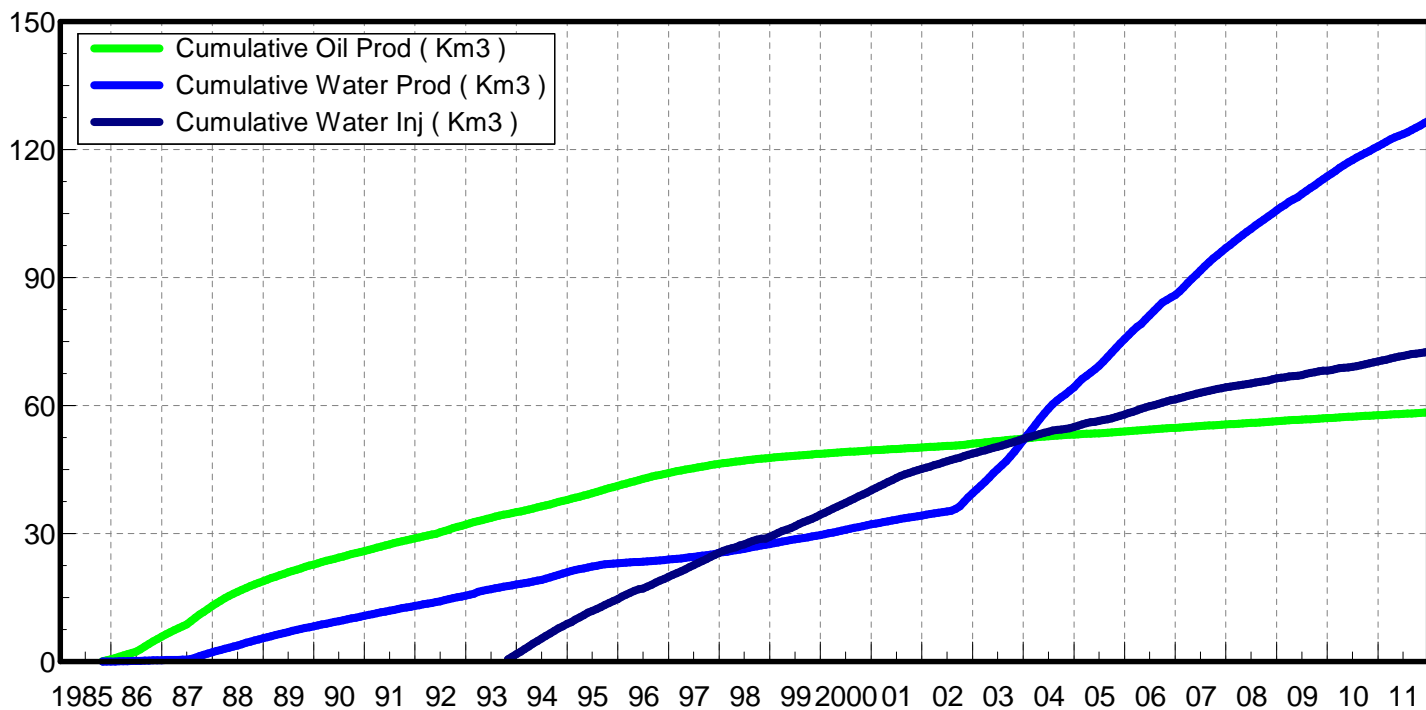
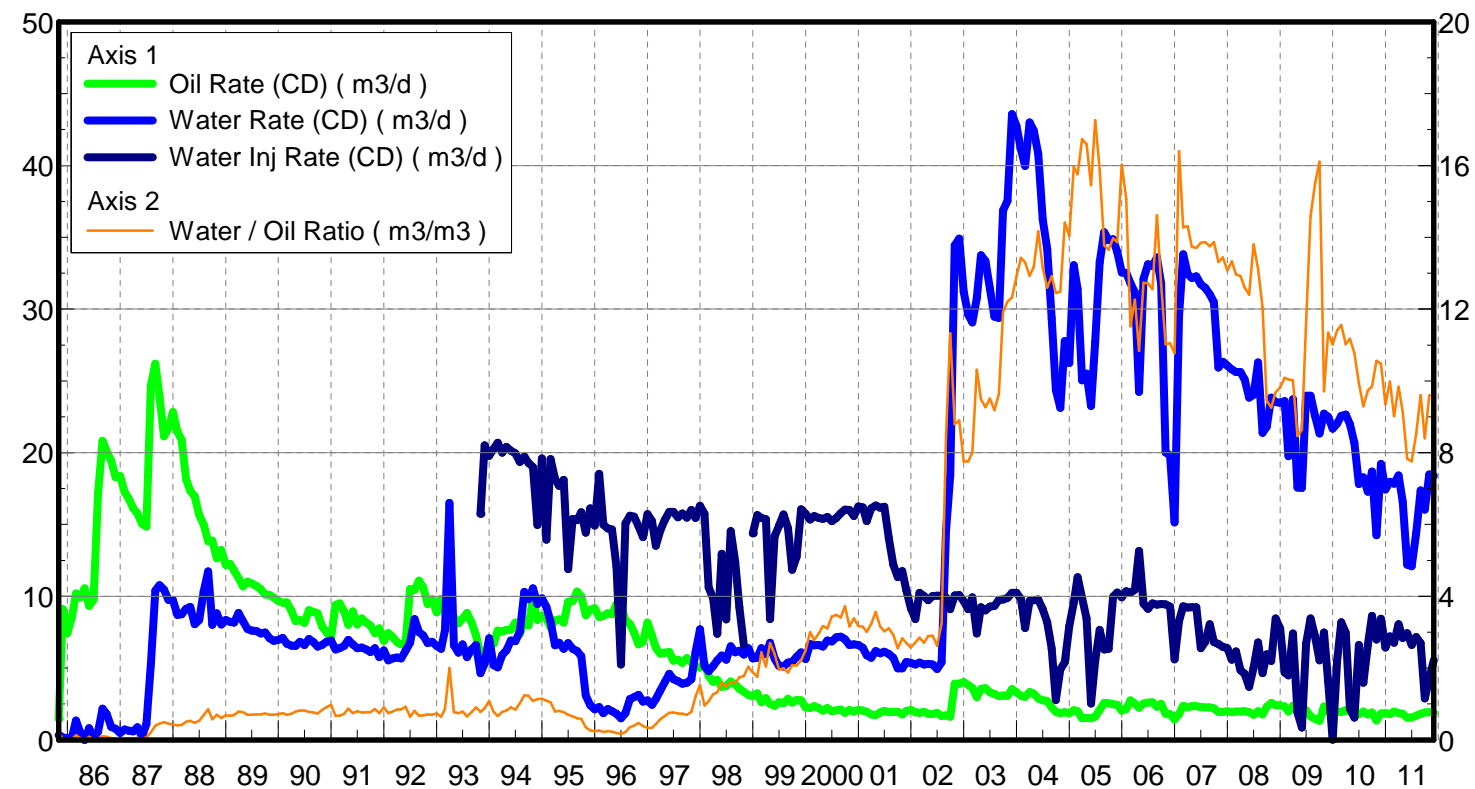
February 20, 2012

Operator: TUNDRA_OIL_&_GAS_LIMITED

Oil Rate (CD) : 1.96 m3/d

Water Rate (CD) : 18.34 m3/d

Water Inj Rate (CD) : 6.58 m3/d



Date

Date	Oil Rate (CD) m3/d	Water Rate (CD) m3/d	Water Oil Ratio m3/m3	Water Inj Rate (CD) m3/d	Cum Oil Prod Km3	Cum Water Prod Km3	Cum Water Inj Km3	Voidage Replacement Ratio	Cum Voidage Replacemt Ratio
10/31/1985	1.49	0.32	0.22		0.05	0.01	0.00	0.000	0.000
11/30/1985	9.11	0.17	0.02		0.32	0.02	0.00	0.000	0.000
12/31/1985	7.43	0.12	0.02		0.55	0.02	0.00	0.000	0.000
1/31/1986	8.55	0.15	0.02		0.81	0.02	0.00	0.000	0.000
2/28/1986	10.19	1.34	0.13		1.10	0.06	0.00	0.000	0.000
3/31/1986	9.92	0.49	0.05		1.41	0.08	0.00	0.000	0.000
4/30/1986	10.56	0.00	0.00		1.72	0.08	0.00	0.000	0.000
5/31/1986	9.32	0.83	0.09		2.01	0.10	0.00	0.000	0.000
6/30/1986	9.77	0.18	0.02		2.31	0.11	0.00	0.000	0.000
7/31/1986	17.18	0.56	0.03		2.84	0.12	0.00	0.000	0.000
8/31/1986	20.82	2.18	0.10		3.48	0.19	0.00	0.000	0.000
9/30/1986	20.09	1.79	0.09		4.09	0.25	0.00	0.000	0.000
10/31/1986	19.45	0.90	0.05		4.69	0.27	0.00	0.000	0.000
11/30/1986	18.28	0.78	0.04		5.24	0.30	0.00	0.000	0.000
12/31/1986	18.38	0.48	0.03		5.81	0.31	0.00	0.000	0.000
1/31/1987	17.26	0.73	0.04		6.34	0.33	0.00	0.000	0.000
2/28/1987	16.79	0.63	0.04		6.81	0.35	0.00	0.000	0.000
3/31/1987	16.13	0.59	0.04		7.31	0.37	0.00	0.000	0.000
4/30/1987	15.77	0.89	0.06		7.79	0.40	0.00	0.000	0.000
5/31/1987	15.05	0.24	0.02		8.25	0.40	0.00	0.000	0.000
6/30/1987	14.86	1.11	0.07		8.70	0.44	0.00	0.000	0.000
7/31/1987	24.69	5.29	0.21		9.46	0.60	0.00	0.000	0.000
8/31/1987	26.20	10.40	0.40		10.28	0.92	0.00	0.000	0.000
9/30/1987	23.90	10.78	0.45		10.99	1.25	0.00	0.000	0.000
10/31/1987	21.15	10.46	0.49		11.65	1.57	0.00	0.000	0.000
11/30/1987	21.69	9.74	0.45		12.30	1.86	0.00	0.000	0.000
12/31/1987	22.83	9.73	0.43		13.01	2.17	0.00	0.000	0.000
1/31/1988	21.46	8.70	0.41		13.67	2.44	0.00	0.000	0.000
2/29/1988	20.92	8.75	0.42		14.28	2.69	0.00	0.000	0.000
3/31/1988	18.15	9.13	0.50		14.84	2.97	0.00	0.000	0.000
4/30/1988	17.34	9.27	0.53		15.36	3.25	0.00	0.000	0.000
5/31/1988	16.95	8.05	0.47		15.89	3.50	0.00	0.000	0.000
6/30/1988	15.66	8.35	0.53		16.36	3.75	0.00	0.000	0.000
7/31/1988	15.00	10.33	0.69		16.82	4.07	0.00	0.000	0.000
8/31/1988	13.84	11.75	0.85		17.25	4.43	0.00	0.000	0.000
9/30/1988	13.88	8.00	0.58		17.67	4.67	0.00	0.000	0.000
10/31/1988	12.65	8.81	0.70		18.06	4.95	0.00	0.000	0.000
11/30/1988	13.23	8.05	0.61		18.46	5.19	0.00	0.000	0.000
12/31/1988	12.19	8.35	0.69		18.84	5.45	0.00	0.000	0.000
1/31/1989	12.25	8.20	0.67		19.22	5.70	0.00	0.000	0.000
2/28/1989	11.81	8.18	0.69		19.55	5.93	0.00	0.000	0.000
3/31/1989	11.26	8.85	0.79		19.90	6.21	0.00	0.000	0.000
4/30/1989	10.70	8.26	0.77		20.22	6.45	0.00	0.000	0.000
5/31/1989	11.02	7.73	0.70		20.56	6.69	0.00	0.000	0.000
6/30/1989	10.89	7.62	0.70		20.88	6.92	0.00	0.000	0.000
7/31/1989	10.73	7.60	0.71		21.22	7.16	0.00	0.000	0.000
8/31/1989	10.51	7.42	0.71		21.54	7.39	0.00	0.000	0.000
9/30/1989	10.13	7.49	0.74		21.85	7.61	0.00	0.000	0.000

Date	Oil Rate (CD) m3/d	Water Rate (CD) m3/d	Water Oil Ratio m3/m3	Water Inj Rate (CD) m3/d	Cum Oil Prod Km3	Cum Water Prod Km3	Cum Water Inj Km3	Voidage Replacement Ratio	Cum Voidage Replacemt Ratio
10/31/1989	10.08	7.09	0.70		22.16	7.83	0.00	0.000	0.000
11/30/1989	9.91	6.91	0.70		22.46	8.04	0.00	0.000	0.000
12/31/1989	9.68	6.96	0.72		22.76	8.25	0.00	0.000	0.000
1/31/1990	9.55	7.11	0.74		23.05	8.47	0.00	0.000	0.000
2/28/1990	9.56	6.69	0.70		23.32	8.66	0.00	0.000	0.000
3/31/1990	8.99	6.57	0.73		23.60	8.87	0.00	0.000	0.000
4/30/1990	8.28	6.54	0.79		23.85	9.06	0.00	0.000	0.000
5/31/1990	8.35	6.82	0.82		24.11	9.27	0.00	0.000	0.000
6/30/1990	8.14	6.61	0.81		24.35	9.47	0.00	0.000	0.000
7/31/1990	9.04	7.03	0.78		24.63	9.69	0.00	0.000	0.000
8/31/1990	8.90	6.80	0.76		24.91	9.90	0.00	0.000	0.000
9/30/1990	8.82	6.50	0.74		25.17	10.10	0.00	0.000	0.000
10/31/1990	7.91	6.60	0.84		25.42	10.30	0.00	0.000	0.000
11/30/1990	7.47	6.84	0.92		25.64	10.51	0.00	0.000	0.000
12/31/1990	7.10	6.93	0.98		25.86	10.72	0.00	0.000	0.000
1/31/1991	9.39	6.30	0.67		26.15	10.92	0.00	0.000	0.000
2/28/1991	9.50	6.39	0.67		26.42	11.09	0.00	0.000	0.000
3/31/1991	8.96	6.54	0.73		26.70	11.30	0.00	0.000	0.000
4/30/1991	8.01	6.96	0.87		26.94	11.51	0.00	0.000	0.000
5/31/1991	8.95	6.64	0.74		27.21	11.71	0.00	0.000	0.000
6/30/1991	8.05	6.39	0.79		27.45	11.90	0.00	0.000	0.000
7/31/1991	8.45	6.44	0.76		27.72	12.10	0.00	0.000	0.000
8/31/1991	8.18	6.29	0.77		27.97	12.30	0.00	0.000	0.000
9/30/1991	7.96	6.13	0.77		28.21	12.48	0.00	0.000	0.000
10/31/1991	7.43	6.38	0.86		28.44	12.68	0.00	0.000	0.000
11/30/1991	7.77	5.76	0.74		28.67	12.85	0.00	0.000	0.000
12/31/1991	6.90	6.22	0.90		28.89	13.05	0.00	0.000	0.000
1/31/1992	7.44	5.55	0.75		29.12	13.22	0.00	0.000	0.000
2/29/1992	7.19	5.66	0.79		29.32	13.38	0.00	0.000	0.000
3/31/1992	6.80	5.73	0.84		29.54	13.56	0.00	0.000	0.000
4/30/1992	6.65	5.67	0.85		29.74	13.73	0.00	0.000	0.000
5/31/1992	6.72	6.22	0.92		29.94	13.92	0.00	0.000	0.000
6/30/1992	10.51	6.76	0.64		30.26	14.12	0.00	0.000	0.000
7/31/1992	10.44	8.42	0.81		30.58	14.39	0.00	0.000	0.000
8/31/1992	11.08	7.50	0.68		30.93	14.62	0.00	0.000	0.000
9/30/1992	10.65	7.28	0.68		31.25	14.84	0.00	0.000	0.000
10/31/1992	9.45	6.74	0.71		31.54	15.05	0.00	0.000	0.000
11/30/1992	9.79	6.84	0.70		31.83	15.25	0.00	0.000	0.000
12/31/1992	8.87	6.54	0.74		32.11	15.45	0.00	0.000	0.000
1/31/1993	9.82	6.35	0.65		32.41	15.65	0.00	0.000	0.000
2/28/1993	8.88	7.64	0.86		32.66	15.86	0.00	0.000	0.000
3/31/1993	8.25	16.51	2.00		32.92	16.38	0.00	0.000	0.000
4/30/1993	8.54	6.58	0.77		33.17	16.57	0.00	0.000	0.000
5/31/1993	8.12	6.07	0.75		33.42	16.76	0.00	0.000	0.000
6/30/1993	8.44	6.66	0.79		33.68	16.96	0.00	0.000	0.000
7/31/1993	8.84	5.76	0.65		33.95	17.14	0.00	0.000	0.000
8/31/1993	8.19	6.30	0.77		34.21	17.33	0.00	0.000	0.000
9/30/1993	7.29	6.61	0.91		34.42	17.53	0.00	0.000	0.000

Date	Oil Rate (CD) m3/d	Water Rate (CD) m3/d	Water Oil Ratio m3/m3	Water Inj Rate (CD) m3/d	Cum Oil Prod Km3	Cum Water Prod Km3	Cum Water Inj Km3	Voidage Replacement Ratio	Cum Voidage Replacemt Ratio
10/31/1993	5.95	4.65	0.78	15.74	34.61	17.68	0.49	2.468	0.018
11/30/1993	6.07	5.32	0.88	20.52	34.79	17.84	1.10	2.899	0.040
12/31/1993	6.56	7.09	1.08	19.78	34.99	18.06	1.72	2.202	0.061
1/31/1994	6.70	5.21	0.78	20.28	35.20	18.22	2.35	2.838	0.083
2/28/1994	7.61	5.05	0.66	20.69	35.42	18.36	2.92	2.854	0.102
3/31/1994	7.54	5.92	0.78	20.01	35.65	18.54	3.54	2.471	0.123
4/30/1994	7.65	6.24	0.82	20.41	35.88	18.73	4.16	2.416	0.143
5/31/1994	7.68	6.93	0.90	20.14	36.12	18.94	4.78	2.201	0.163
6/30/1994	8.17	6.88	0.84	19.96	36.36	19.15	5.38	2.160	0.181
7/31/1994	7.39	7.52	1.02	19.35	36.59	19.38	5.98	2.003	0.200
8/31/1994	8.27	10.31	1.25	19.73	36.85	19.70	6.59	1.553	0.217
9/30/1994	7.97	9.79	1.23	19.30	37.09	20.00	7.17	1.596	0.233
10/31/1994	9.78	10.56	1.08	18.99	37.39	20.32	7.76	1.419	0.249
11/30/1994	8.35	9.46	1.13	14.97	37.64	20.61	8.21	1.261	0.261
12/31/1994	8.64	9.87	1.14	19.60	37.91	20.91	8.82	1.585	0.277
1/31/1995	8.47	9.27	1.09	13.93	38.17	21.20	9.25	1.189	0.287
2/28/1995	7.84	8.23	1.05	19.55	38.39	21.43	9.80	1.862	0.301
3/31/1995	8.32	6.59	0.79	18.18	38.65	21.64	10.36	2.021	0.316
4/30/1995	8.39	6.78	0.81	17.68	38.90	21.84	10.89	1.921	0.329
5/31/1995	8.17	6.34	0.78	18.12	39.15	22.04	11.45	2.082	0.343
6/30/1995	9.62	6.74	0.70	11.89	39.44	22.24	11.81	1.250	0.351
7/31/1995	9.66	6.34	0.66	15.39	39.74	22.43	12.28	1.685	0.362
8/31/1995	10.33	6.19	0.60	15.31	40.06	22.63	12.76	1.668	0.373
9/30/1995	9.99	5.84	0.58	15.85	40.36	22.80	13.23	1.817	0.384
10/31/1995	8.68	3.09	0.36	14.42	40.63	22.90	13.68	2.577	0.395
11/30/1995	9.05	2.42	0.27	16.12	40.90	22.97	14.17	3.203	0.407
12/31/1995	9.16	2.14	0.23	14.91	41.18	23.04	14.63	3.113	0.419
1/31/1996	8.56	2.28	0.27	18.54	41.45	23.11	15.20	3.902	0.433
2/29/1996	8.63	1.87	0.22	15.00	41.70	23.16	15.64	3.432	0.444
3/31/1996	8.82	2.14	0.24	14.73	41.97	23.23	16.09	3.138	0.455
4/30/1996	8.76	1.99	0.23	14.65	42.24	23.29	16.53	3.237	0.466
5/31/1996	9.47	1.82	0.19	12.06	42.53	23.34	16.91	2.648	0.474
6/30/1996	9.34	1.51	0.16	5.25	42.81	23.39	17.06	1.249	0.477
7/31/1996	8.32	1.85	0.22	15.08	43.07	23.45	17.53	3.541	0.488
8/31/1996	8.08	2.84	0.35	15.61	43.32	23.53	18.02	3.014	0.500
9/30/1996	7.48	2.98	0.40	15.54	43.54	23.62	18.48	3.024	0.510
10/31/1996	6.65	3.13	0.47	14.89	43.75	23.72	18.94	2.944	0.521
11/30/1996	6.84	2.66	0.39	14.12	43.95	23.80	19.37	3.043	0.530
12/31/1996	8.17	2.76	0.34	15.73	44.21	23.89	19.86	3.070	0.541
1/31/1997	7.25	2.44	0.34	15.22	44.43	23.96	20.33	3.358	0.552
2/28/1997	6.42	2.84	0.44	13.52	44.61	24.04	20.71	2.881	0.560
3/31/1997	6.01	3.44	0.57	14.59	44.80	24.15	21.16	2.816	0.570
4/30/1997	6.08	4.03	0.66	15.32	44.98	24.27	21.62	2.647	0.580
5/31/1997	6.11	4.61	0.75	15.88	45.17	24.41	22.11	2.489	0.590
6/30/1997	5.53	4.22	0.76	15.88	45.34	24.54	22.59	2.727	0.600
7/31/1997	5.58	4.10	0.73	15.51	45.51	24.67	23.07	2.714	0.610
8/31/1997	5.36	3.91	0.73	15.78	45.67	24.79	23.56	2.888	0.620
9/30/1997	5.70	3.97	0.70	15.47	45.85	24.91	24.02	2.753	0.629

Date	Oil Rate (CD) m3/d	Water Rate (CD) m3/d	Water Oil Ratio m3/m3	Water Inj Rate (CD) m3/d	Cum Oil Prod Km3	Cum Water Prod Km3	Cum Water Inj Km3	Voidage Replacement Ratio	Cum Voidage Replacemt Ratio
10/31/1997	5.40	4.22	0.78	16.01	46.01	25.04	24.52	2.766	0.639
11/30/1997	5.05	6.09	1.21	15.46	46.16	25.22	24.98	2.048	0.648
12/31/1997	5.04	7.70	1.53	16.30	46.32	25.46	25.49	1.778	0.656
1/31/1998	5.35	5.14	0.96	15.74	46.49	25.62	25.97	2.355	0.665
2/28/1998	4.45	4.78	1.07	10.63	46.61	25.75	26.27	1.750	0.670
3/31/1998	4.05	5.14	1.27	9.86	46.74	25.91	26.58	1.564	0.674
4/30/1998	4.18	5.53	1.32	7.38	46.86	26.08	26.80	1.095	0.676
5/31/1998	3.68	5.87	1.59	12.97	46.98	26.26	27.20	1.870	0.683
6/30/1998	3.76	5.59	1.49	8.39	47.09	26.43	27.45	1.256	0.686
7/31/1998	4.07	6.51	1.60	14.53	47.22	26.63	27.90	1.890	0.693
8/31/1998	3.86	6.10	1.58	12.40	47.33	26.82	28.29	1.720	0.698
9/30/1998	3.55	6.20	1.75	9.25	47.44	27.00	28.56	1.279	0.701
10/31/1998	3.35	5.95	1.78	6.60	47.55	27.19	28.77	0.954	0.703
11/30/1998	3.14	6.39	2.03		47.64	27.38	28.77	0.000	0.699
12/31/1998	3.03	5.68	1.87	14.38	47.73	27.56	29.21	2.191	0.706
1/31/1999	3.25	5.73	1.76	15.66	47.83	27.73	29.70	2.350	0.714
2/28/1999	2.63	6.40	2.44	15.46	47.91	27.91	30.13	2.161	0.721
3/31/1999	2.92	5.97	2.05	15.37	48.00	28.10	30.61	2.257	0.729
4/30/1999	2.51	6.77	2.70	8.42	48.07	28.30	30.86	1.122	0.731
5/31/1999	2.37	5.66	2.39	14.15	48.15	28.48	31.30	2.230	0.738
6/30/1999	2.63	5.14	1.96	14.92	48.23	28.63	31.75	2.527	0.746
7/31/1999	2.56	5.11	1.99	15.71	48.30	28.79	32.24	2.686	0.754
8/31/1999	2.87	5.39	1.88	14.74	48.39	28.96	32.69	2.368	0.761
9/30/1999	2.60	5.42	2.09	11.85	48.47	29.12	33.05	1.918	0.766
10/31/1999	2.79	5.77	2.07	12.75	48.56	29.30	33.44	1.938	0.772
11/30/1999	2.75	6.09	2.22	16.05	48.64	29.48	33.92	2.332	0.779
12/31/1999	2.26	5.63	2.49	15.75	48.71	29.66	34.41	2.506	0.787
1/31/2000	2.22	6.68	3.00	15.35	48.78	29.86	34.89	2.098	0.793
2/29/2000	2.36	6.58	2.79	15.58	48.85	30.05	35.34	2.145	0.800
3/31/2000	2.23	6.61	2.97	15.46	48.92	30.26	35.82	2.133	0.807
4/30/2000	2.05	6.50	3.17	15.39	48.98	30.45	36.28	2.168	0.813
5/31/2000	2.22	6.91	3.11	15.51	49.05	30.67	36.76	2.053	0.820
6/30/2000	1.99	6.85	3.44	15.23	49.11	30.87	37.22	2.051	0.826
7/31/2000	2.05	7.15	3.48	15.45	49.17	31.09	37.70	1.997	0.832
8/31/2000	2.11	7.19	3.41	15.78	49.24	31.32	38.19	2.025	0.838
9/30/2000	1.88	7.00	3.72	16.04	49.29	31.53	38.67	2.126	0.845
10/31/2000	2.09	6.60	3.16	16.01	49.36	31.73	39.17	2.221	0.851
11/30/2000	1.97	6.65	3.38	15.58	49.42	31.93	39.63	2.159	0.857
12/31/2000	2.09	6.62	3.17	16.26	49.48	32.14	40.14	2.251	0.864
1/31/2001	2.04	6.42	3.15	16.20	49.54	32.34	40.64	2.311	0.871
2/28/2001	1.95	5.89	3.01	15.24	49.60	32.50	41.07	2.362	0.877
3/31/2001	1.77	5.72	3.24	16.12	49.65	32.68	41.57	2.587	0.884
4/30/2001	1.74	6.20	3.56	16.32	49.71	32.86	42.05	2.437	0.890
5/31/2001	1.91	6.03	3.16	16.17	49.77	33.05	42.56	2.457	0.897
6/30/2001	2.03	6.14	3.03	16.23	49.83	33.23	43.04	2.414	0.903
7/31/2001	1.93	5.98	3.11	14.05	49.89	33.42	43.48	2.148	0.909
8/31/2001	1.95	5.72	2.93	12.21	49.95	33.60	43.86	1.944	0.913
9/30/2001	1.95	4.97	2.55	11.34	50.00	33.75	44.20	2.048	0.917

Date	Oil Rate (CD) m3/d	Water Rate (CD) m3/d	Water Oil Ratio m3/m3	Water Inj Rate (CD) m3/d	Cum Oil Prod Km3	Cum Water Prod Km3	Cum Water Inj Km3	Voidage Replacement Ratio	Cum Voidage Replacemt Ratio
10/31/2001	1.76	4.99	2.83	11.76	50.06	33.90	44.56	2.140	0.921
11/30/2001	2.01	5.42	2.70	10.41	50.12	34.06	44.87	1.734	0.924
12/31/2001	2.08	5.37	2.58	9.18	50.18	34.23	45.16	1.537	0.926
1/31/2002	1.94	5.25	2.71	8.42	50.24	34.39	45.42	1.447	0.928
2/28/2002	1.89	5.38	2.85	10.24	50.30	34.54	45.71	1.727	0.931
3/31/2002	1.94	5.25	2.70	10.02	50.36	34.71	46.02	1.724	0.934
4/30/2002	1.83	5.28	2.89	9.73	50.41	34.87	46.31	1.674	0.937
5/31/2002	1.80	5.24	2.91	10.02	50.47	35.03	46.62	1.738	0.939
6/30/2002	1.88	4.94	2.63	10.04	50.52	35.18	46.92	1.832	0.942
7/31/2002	1.67	5.40	3.24	10.05	50.58	35.34	47.23	1.708	0.945
8/31/2002	1.71	14.62	8.53	9.90	50.63	35.80	47.54	0.655	0.942
9/30/2002	1.63	18.43	11.33	9.11	50.68	36.35	47.81	0.482	0.937
10/31/2002	3.92	34.45	8.80	10.05	50.80	37.42	48.12	0.283	0.924
11/30/2002	3.92	34.91	8.90	10.08	50.92	38.46	48.43	0.280	0.910
12/31/2002	4.02	31.20	7.76	9.65	51.04	39.43	48.73	0.298	0.899
1/31/2003	3.82	29.63	7.76	9.11	51.16	40.35	49.01	0.296	0.889
2/28/2003	3.63	29.07	8.01	9.92	51.26	41.16	49.29	0.329	0.880
3/31/2003	2.99	30.77	10.31	7.41	51.35	42.12	49.52	0.234	0.869
4/30/2003	3.56	33.76	9.49	9.24	51.46	43.13	49.79	0.266	0.858
5/31/2003	3.60	33.35	9.27	9.02	51.57	44.16	50.07	0.262	0.848
6/30/2003	3.31	31.43	9.50	9.29	51.67	45.11	50.35	0.287	0.838
7/31/2003	3.21	29.46	9.18	9.32	51.77	46.02	50.64	0.307	0.830
8/31/2003	3.05	29.39	9.63	9.75	51.87	46.93	50.94	0.322	0.823
9/30/2003	3.09	36.87	11.92	9.76	51.96	48.04	51.23	0.259	0.812
10/31/2003	3.07	37.54	12.21	9.89	52.05	49.20	51.54	0.257	0.802
11/30/2003	3.54	43.58	12.32	10.24	52.16	50.51	51.85	0.230	0.790
12/31/2003	3.31	42.75	12.91	10.25	52.26	51.83	52.17	0.234	0.779
1/31/2004	3.06	41.12	13.43	9.82	52.36	53.11	52.47	0.234	0.769
2/29/2004	3.00	39.96	13.31	7.79	52.44	54.27	52.70	0.191	0.759
3/31/2004	3.33	43.00	12.93	9.69	52.55	55.60	53.00	0.220	0.749
4/30/2004	3.22	42.44	13.17	9.74	52.64	56.87	53.29	0.225	0.739
5/31/2004	2.88	40.81	14.17	9.77	52.73	58.14	53.59	0.235	0.730
6/30/2004	2.75	36.24	13.15	9.10	52.82	59.23	53.86	0.246	0.723
7/31/2004	2.71	34.20	12.60	8.18	52.90	60.29	54.12	0.234	0.716
8/31/2004	2.27	29.37	12.91	6.37	52.97	61.20	54.32	0.212	0.710
9/30/2004	1.96	24.37	12.45	2.77	53.03	61.93	54.40	0.111	0.704
10/31/2004	1.85	23.11	12.48	4.92	53.09	62.64	54.55	0.208	0.699
11/30/2004	1.93	27.78	14.41	5.40	53.15	63.48	54.71	0.191	0.694
12/31/2004	1.87	26.24	14.04	7.92	53.20	64.29	54.96	0.296	0.690
1/31/2005	2.07	33.06	15.96	9.55	53.27	65.32	55.25	0.284	0.685
2/28/2005	1.99	31.39	15.75	11.34	53.32	66.20	55.57	0.355	0.681
3/31/2005	1.50	25.03	16.74	9.89	53.37	66.97	55.88	0.388	0.678
4/30/2005	1.54	25.50	16.60	8.45	53.42	67.74	56.13	0.326	0.675
5/31/2005	1.50	23.25	15.45	2.53	53.46	68.46	56.21	0.107	0.670
6/30/2005	1.61	27.74	17.26	5.52	53.51	69.29	56.38	0.196	0.665
7/31/2005	2.09	33.25	15.88	7.66	53.58	70.32	56.61	0.226	0.660
8/31/2005	2.57	35.36	13.78	6.29	53.65	71.42	56.81	0.174	0.653
9/30/2005	2.55	34.80	13.65	6.34	53.73	72.46	57.00	0.178	0.648

Date	Oil Rate (CD) m3/d	Water Rate (CD) m3/d	Water Oil Ratio m3/m3	Water Inj Rate (CD) m3/d	Cum Oil Prod Km3	Cum Water Prod Km3	Cum Water Inj Km3	Voidage Replacement Ratio	Cum Voidage Replacemt Ratio
10/31/2005	2.50	34.86	13.97	9.98	53.81	73.54	57.31	0.280	0.643
11/30/2005	2.45	33.98	13.87	10.27	53.88	74.56	57.62	0.296	0.639
12/31/2005	2.03	32.56	16.02	9.94	53.95	75.57	57.92	0.300	0.635
1/31/2006	2.16	32.53	15.07	10.36	54.01	76.58	58.25	0.312	0.632
2/28/2006	2.76	31.82	11.53	10.25	54.09	77.47	58.53	0.314	0.629
3/31/2006	2.54	31.16	12.27	10.45	54.17	78.43	58.86	0.328	0.625
4/30/2006	2.24	24.25	10.84	13.17	54.24	79.16	59.25	0.529	0.625
5/31/2006	2.52	32.11	12.74	9.48	54.31	80.16	59.55	0.289	0.621
6/30/2006	2.61	33.14	12.71	9.13	54.39	81.15	59.82	0.269	0.617
7/31/2006	2.63	33.00	12.56	9.51	54.47	82.17	60.11	0.282	0.614
8/31/2006	2.30	33.59	14.61	9.42	54.54	83.22	60.41	0.275	0.610
9/30/2006	2.50	31.77	12.69	9.46	54.62	84.17	60.69	0.291	0.607
10/31/2006	1.82	20.02	11.02	9.44	54.68	84.79	60.98	0.459	0.606
11/30/2006	1.79	19.80	11.05	9.28	54.73	85.38	61.26	0.457	0.605
12/31/2006	1.41	15.15	10.77	5.61	54.77	85.85	61.43	0.360	0.604
1/31/2007	1.80	29.51	16.39	8.27	54.83	86.77	61.69	0.276	0.601
2/28/2007	2.37	33.81	14.28	9.31	54.90	87.71	61.95	0.270	0.598
3/31/2007	2.27	32.43	14.31	9.21	54.97	88.72	62.24	0.278	0.595
4/30/2007	2.34	32.18	13.73	9.24	55.04	89.69	62.51	0.281	0.592
5/31/2007	2.36	32.29	13.70	9.25	55.11	90.69	62.80	0.280	0.589
6/30/2007	2.29	31.73	13.85	6.39	55.18	91.64	62.99	0.197	0.585
7/31/2007	2.27	31.48	13.87	6.84	55.25	92.61	63.20	0.213	0.582
8/31/2007	2.26	31.04	13.75	8.07	55.32	93.58	63.45	0.255	0.579
9/30/2007	2.20	30.48	13.87	6.81	55.38	94.49	63.66	0.219	0.576
10/31/2007	1.95	25.93	13.32	6.68	55.44	95.29	63.87	0.252	0.574
11/30/2007	1.96	26.34	13.44	6.47	55.50	96.09	64.06	0.241	0.571
12/31/2007	1.99	26.06	13.07	6.38	55.56	96.89	64.26	0.240	0.569
1/31/2008	1.94	25.80	13.33	5.59	55.62	97.69	64.43	0.212	0.566
2/29/2008	1.98	25.62	12.97	6.17	55.68	98.44	64.61	0.235	0.564
3/31/2008	1.98	25.63	12.92	4.85	55.74	99.23	64.76	0.185	0.561
4/30/2008	1.99	25.11	12.61	4.61	55.80	99.98	64.90	0.179	0.559
5/31/2008	1.92	23.83	12.40	3.68	55.86	100.72	65.01	0.151	0.556
6/30/2008	1.74	24.04	13.80	5.03	55.92	101.44	65.16	0.205	0.554
7/31/2008	2.00	26.28	13.12	6.78	55.98	102.26	65.37	0.252	0.552
8/31/2008	1.77	21.38	12.05	4.65	56.03	102.92	65.52	0.213	0.550
9/30/2008	2.31	21.80	9.45	5.96	56.10	103.57	65.70	0.265	0.548
10/31/2008	2.58	23.84	9.25	5.49	56.18	104.31	65.87	0.223	0.546
11/30/2008	2.43	23.53	9.69	8.46	56.25	105.02	66.12	0.349	0.545
12/31/2008	2.39	23.47	9.82	7.75	56.33	105.75	66.36	0.321	0.544
1/31/2009	2.34	23.59	10.09	4.68	56.40	106.48	66.51	0.193	0.542
2/28/2009	1.97	19.77	10.04	4.50	56.46	107.03	66.63	0.221	0.540
3/31/2009	2.37	23.73	10.02	7.41	56.53	107.77	66.86	0.304	0.539
4/30/2009	2.08	17.57	8.46	1.91	56.59	108.29	66.92	0.105	0.537
5/31/2009	2.03	17.54	8.63	0.86	56.65	108.84	66.95	0.048	0.535
6/30/2009	2.06	23.97	11.62	6.69	56.72	109.56	67.15	0.272	0.533
7/31/2009	1.64	23.96	14.59	8.46	56.77	110.30	67.41	0.346	0.532
8/31/2009	1.46	22.57	15.50	7.21	56.81	111.00	67.63	0.313	0.531
9/30/2009	1.33	21.34	16.10	5.55	56.85	111.64	67.80	0.256	0.529

Date	Oil Rate (CD) m3/d	Water Rate (CD) m3/d	Water Oil Ratio m3/m3	Water Inj Rate (CD) m3/d	Cum Oil Prod Km3	Cum Water Prod Km3	Cum Water Inj Km3	Voidage Replacement Ratio	Cum Voidage Replacemt Ratio
10/31/2009	2.34	22.71	9.71	7.47	56.92	112.34	68.03	0.319	0.528
11/30/2009	1.98	22.50	11.35	4.06	56.98	113.02	68.15	0.176	0.526
12/31/2009	1.97	21.67	11.01	0.01	57.05	113.69	68.15	0.000	0.523
1/31/2010	1.93	22.03	11.40	5.49	57.11	114.37	68.32	0.243	0.522
2/28/2010	1.95	22.56	11.56	8.19	57.16	115.01	68.55	0.354	0.521
3/31/2010	2.05	22.65	11.02	7.45	57.22	115.71	68.78	0.320	0.520
4/30/2010	1.97	21.98	11.18	2.17	57.28	116.37	68.85	0.096	0.518
5/31/2010	1.92	20.66	10.77	1.56	57.34	117.01	68.90	0.074	0.516
6/30/2010	1.79	17.81	9.93	6.60	57.40	117.54	69.10	0.360	0.515
7/31/2010	1.97	18.29	9.29	3.98	57.46	118.11	69.22	0.211	0.514
8/31/2010	1.78	17.29	9.73	6.60	57.51	118.65	69.42	0.371	0.513
9/30/2010	1.90	18.69	9.85	8.63	57.57	119.21	69.68	0.449	0.513
10/31/2010	1.35	14.25	10.56	6.99	57.61	119.65	69.90	0.477	0.513
11/30/2010	1.84	19.22	10.48	8.43	57.67	120.22	70.15	0.427	0.512
12/31/2010	1.86	17.43	9.35	6.44	57.72	120.77	70.35	0.358	0.512
1/31/2011	1.80	17.98	9.98	7.22	57.78	121.32	70.58	0.390	0.511
2/28/2011	1.98	17.85	9.02	6.76	57.83	121.82	70.76	0.367	0.511
3/31/2011	1.87	18.42	9.84	8.07	57.89	122.39	71.01	0.425	0.510
4/30/2011	1.82	16.60	9.14	7.10	57.95	122.89	71.23	0.414	0.510
5/31/2011	1.56	12.20	7.83	7.44	58.00	123.27	71.46	0.588	0.510
6/30/2011	1.56	12.10	7.76	6.62	58.04	123.63	71.66	0.527	0.510
7/31/2011	1.69	14.38	8.52	7.18	58.09	124.08	71.88	0.483	0.510
8/31/2011	1.81	17.38	9.60	6.74	58.15	124.62	72.09	0.376	0.510
9/30/2011	1.91	16.04	8.40	2.88	58.21	125.10	72.17	0.173	0.509
10/31/2011	1.93	18.48	9.59	4.26	58.27	125.67	72.31	0.224	0.507
11/30/2011	1.92	18.41	9.61	5.53	58.33	126.22	72.47	0.292	0.506
12/31/2011	1.96	18.34	9.37	6.58	58.39	126.79	72.68	0.348	0.506

Pattern: 2-28-010-29 Set: Kola Unit #1

Oil Formation Vol. Factor : 1.05 m3/m3

Water Formation Vol Factor : 1.00 m3/m3

Water / Oil Ratio : 14.69 m3/m3

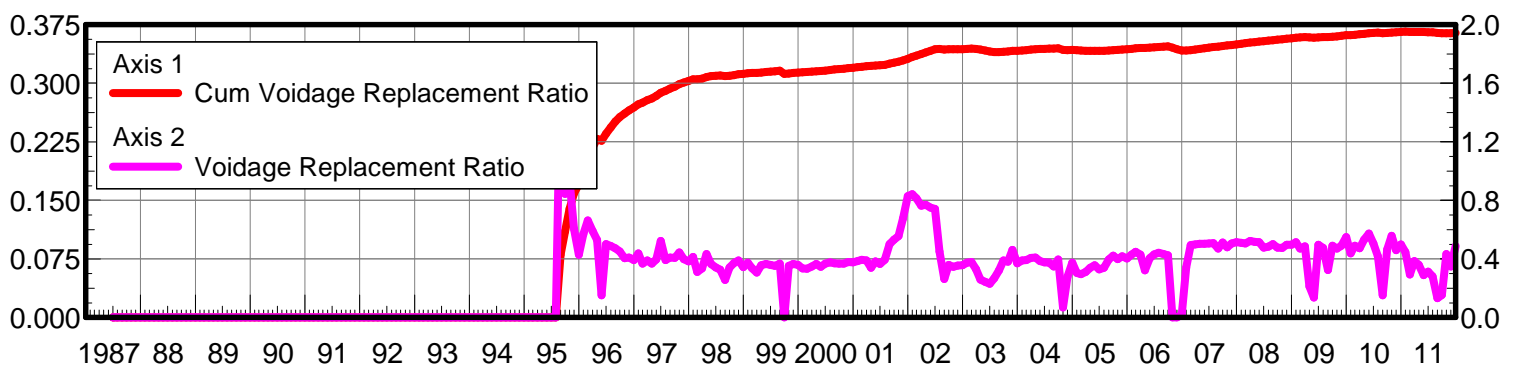
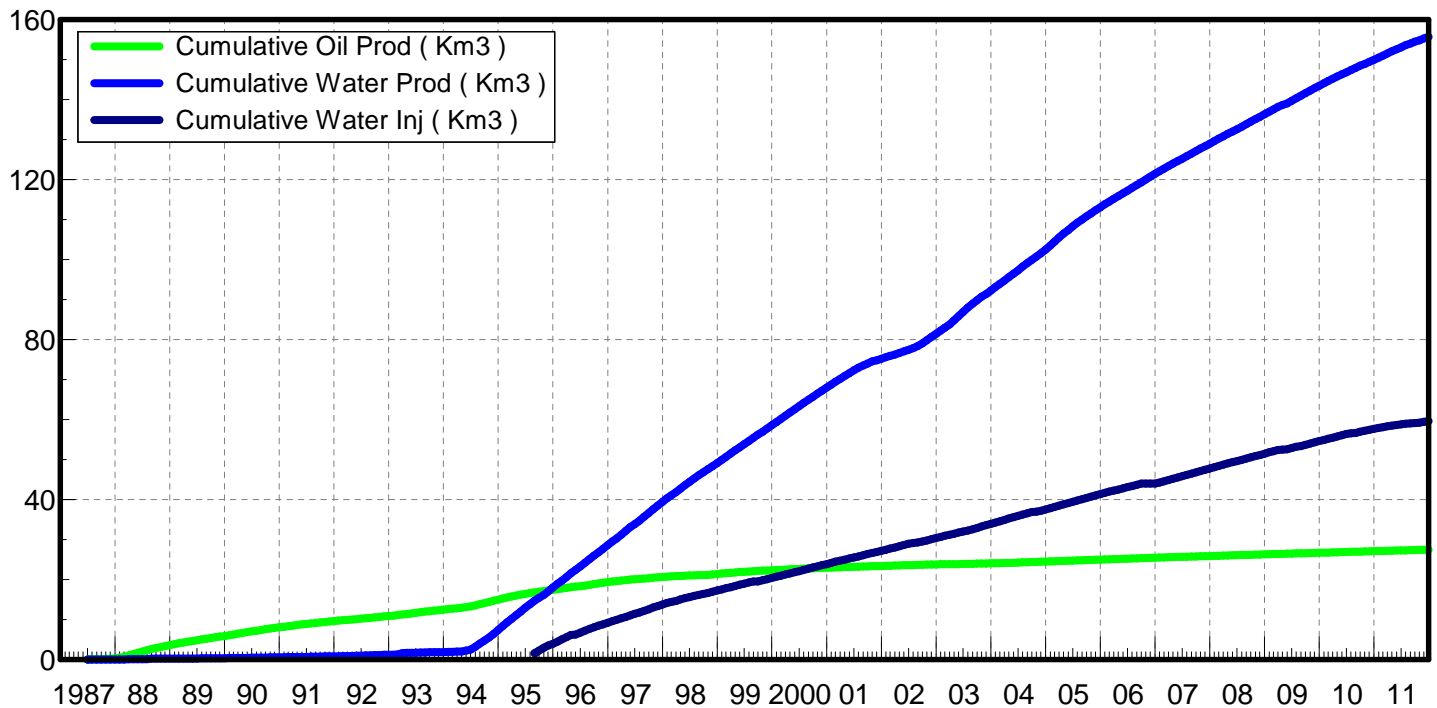
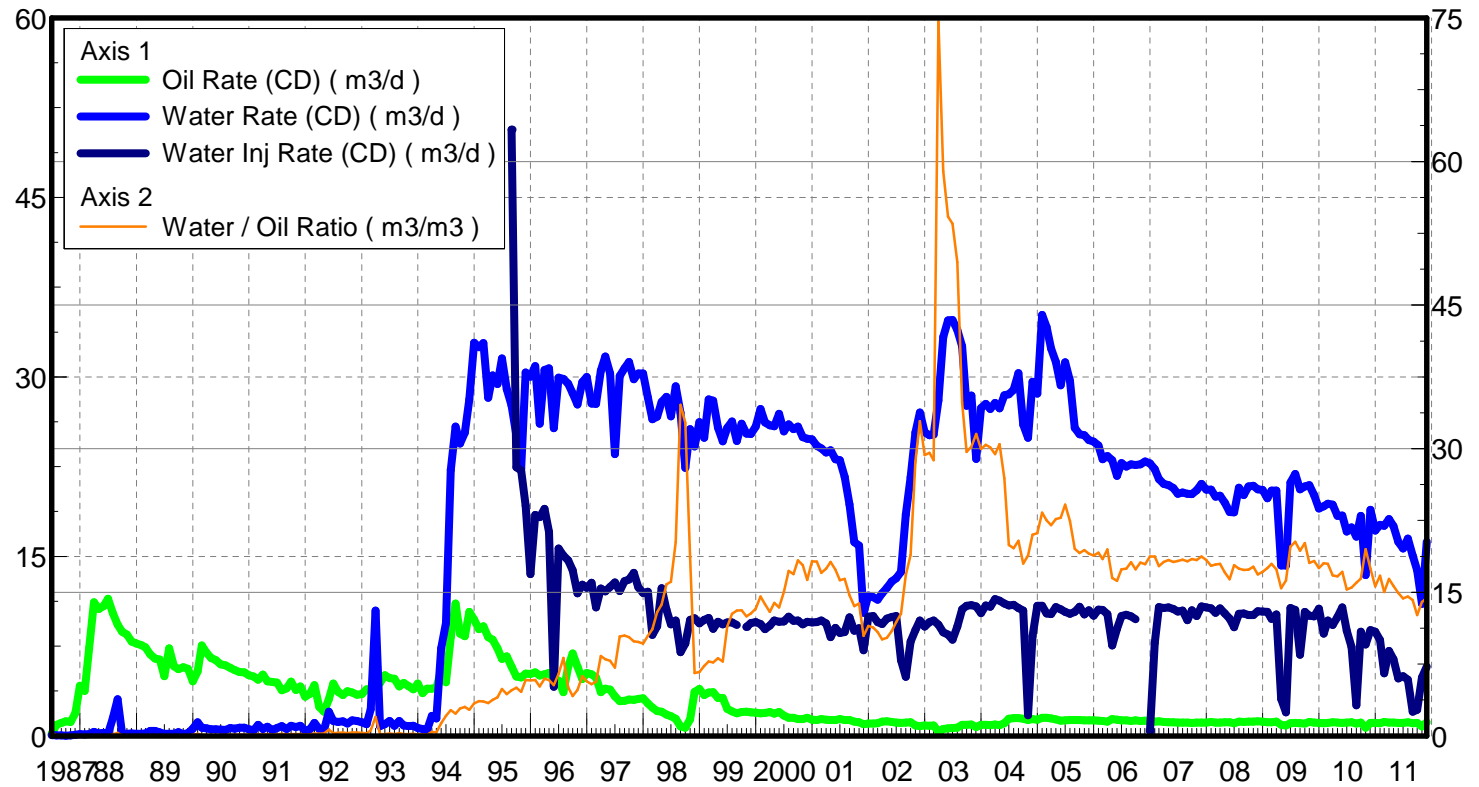
February 20, 2012

Operator: TUNDRA_OIL_&_GAS_LIMITED

Oil Rate (CD) : 0.92 m3/d

Water Rate (CD) : 13.46 m3/d

Water Inj Rate (CD) : 6.70 m3/d



Date

Date	Oil Rate (CD) m3/d	Water Rate (CD) m3/d	Water Oil Ratio m3/m3	Water Inj Rate (CD) m3/d	Cum Oil Prod Km3	Cum Water Prod Km3	Cum Water Inj Km3	Voidage Replacement Ratio	Cum Voidage Replacemt Ratio
6/30/1987	0.21	0.07	0.33		0.01	0.00	0.00	0.000	0.000
7/31/1987	0.93	0.05	0.06		0.04	0.00	0.00	0.000	0.000
8/31/1987	1.08	0.03	0.03		0.07	0.00	0.00	0.000	0.000
9/30/1987	1.23	0.03	0.02		0.11	0.01	0.00	0.000	0.000
10/31/1987	1.16	0.05	0.05		0.14	0.01	0.00	0.000	0.000
11/30/1987	1.92	0.10	0.05		0.20	0.01	0.00	0.000	0.000
12/31/1987	4.19	0.14	0.03		0.33	0.01	0.00	0.000	0.000
1/31/1988	3.76	0.12	0.03		0.45	0.02	0.00	0.000	0.000
2/29/1988	7.35	0.14	0.02		0.66	0.02	0.00	0.000	0.000
3/31/1988	11.17	0.33	0.03		1.00	0.03	0.00	0.000	0.000
4/30/1988	10.61	0.21	0.02		1.32	0.04	0.00	0.000	0.000
5/31/1988	10.86	0.25	0.02		1.66	0.05	0.00	0.000	0.000
6/30/1988	11.45	0.17	0.01		2.00	0.05	0.00	0.000	0.000
7/31/1988	10.27	1.50	0.15		2.32	0.10	0.00	0.000	0.000
8/31/1988	9.31	3.06	0.33		2.61	0.19	0.00	0.000	0.000
9/30/1988	8.70	0.14	0.02		2.87	0.20	0.00	0.000	0.000
10/31/1988	8.46	0.17	0.02		3.13	0.20	0.00	0.000	0.000
11/30/1988	7.88	0.19	0.02		3.37	0.21	0.00	0.000	0.000
12/31/1988	7.72	0.17	0.02		3.61	0.21	0.00	0.000	0.000
1/31/1989	7.57	0.19	0.02		3.84	0.22	0.00	0.000	0.000
2/28/1989	7.39	0.19	0.03		4.05	0.22	0.00	0.000	0.000
3/31/1989	6.81	0.42	0.06		4.26	0.24	0.00	0.000	0.000
4/30/1989	6.46	0.41	0.06		4.46	0.25	0.00	0.000	0.000
5/31/1989	6.38	0.28	0.04		4.65	0.26	0.00	0.000	0.000
6/30/1989	4.99	0.17	0.03		4.80	0.26	0.00	0.000	0.000
7/31/1989	7.30	0.17	0.02		5.03	0.27	0.00	0.000	0.000
8/31/1989	5.81	0.17	0.03		5.21	0.27	0.00	0.000	0.000
9/30/1989	5.57	0.31	0.06		5.38	0.28	0.00	0.000	0.000
10/31/1989	5.75	0.16	0.03		5.55	0.29	0.00	0.000	0.000
11/30/1989	5.60	0.22	0.04		5.72	0.29	0.00	0.000	0.000
12/31/1989	4.55	0.60	0.13		5.86	0.31	0.00	0.000	0.000
1/31/1990	5.40	1.13	0.21		6.03	0.35	0.00	0.000	0.000
2/28/1990	7.56	0.68	0.09		6.24	0.37	0.00	0.000	0.000
3/31/1990	6.93	0.62	0.09		6.46	0.39	0.00	0.000	0.000
4/30/1990	6.52	0.55	0.08		6.65	0.40	0.00	0.000	0.000
5/31/1990	6.33	0.55	0.09		6.85	0.42	0.00	0.000	0.000
6/30/1990	5.98	0.53	0.09		7.03	0.44	0.00	0.000	0.000
7/31/1990	5.91	0.50	0.09		7.21	0.45	0.00	0.000	0.000
8/31/1990	5.68	0.65	0.12		7.39	0.47	0.00	0.000	0.000
9/30/1990	5.49	0.59	0.11		7.55	0.49	0.00	0.000	0.000
10/31/1990	5.33	0.68	0.13		7.72	0.51	0.00	0.000	0.000
11/30/1990	5.30	0.69	0.13		7.88	0.53	0.00	0.000	0.000
12/31/1990	5.08	0.54	0.11		8.04	0.55	0.00	0.000	0.000
1/31/1991	4.96	0.48	0.10		8.19	0.56	0.00	0.000	0.000
2/28/1991	4.70	0.92	0.20		8.32	0.59	0.00	0.000	0.000
3/31/1991	5.11	0.59	0.12		8.48	0.61	0.00	0.000	0.000
4/30/1991	4.55	0.78	0.17		8.62	0.63	0.00	0.000	0.000
5/31/1991	4.50	0.50	0.11		8.75	0.65	0.00	0.000	0.000

Date	Oil Rate (CD) m3/d	Water Rate (CD) m3/d	Water Oil Ratio m3/m3	Water Inj Rate (CD) m3/d	Cum Oil Prod Km3	Cum Water Prod Km3	Cum Water Inj Km3	Voidage Replacement Ratio	Cum Voidage Replacemt Ratio
6/30/1991	4.46	0.66	0.15		8.89	0.67	0.00	0.000	0.000
7/31/1991	3.82	0.81	0.21		9.01	0.69	0.00	0.000	0.000
8/31/1991	3.97	0.57	0.14		9.13	0.71	0.00	0.000	0.000
9/30/1991	4.55	0.83	0.18		9.27	0.73	0.00	0.000	0.000
10/31/1991	3.84	0.72	0.19		9.39	0.76	0.00	0.000	0.000
11/30/1991	4.13	0.84	0.20		9.51	0.78	0.00	0.000	0.000
12/31/1991	3.29	0.45	0.14		9.61	0.80	0.00	0.000	0.000
1/31/1992	3.52	0.55	0.16		9.72	0.81	0.00	0.000	0.000
2/29/1992	4.23	1.08	0.26		9.84	0.84	0.00	0.000	0.000
3/31/1992	2.41	0.57	0.24		9.92	0.86	0.00	0.000	0.000
4/30/1992	2.03	0.51	0.25		9.98	0.88	0.00	0.000	0.000
5/31/1992	3.06	2.01	0.66		10.07	0.94	0.00	0.000	0.000
6/30/1992	4.37	1.26	0.29		10.20	0.98	0.00	0.000	0.000
7/31/1992	3.69	1.17	0.32		10.32	1.01	0.00	0.000	0.000
8/31/1992	3.42	1.21	0.35		10.43	1.05	0.00	0.000	0.000
9/30/1992	3.74	1.04	0.28		10.54	1.08	0.00	0.000	0.000
10/31/1992	3.63	1.30	0.36		10.65	1.12	0.00	0.000	0.000
11/30/1992	3.44	1.24	0.36		10.75	1.16	0.00	0.000	0.000
12/31/1992	3.49	1.13	0.32		10.86	1.19	0.00	0.000	0.000
1/31/1993	3.90	0.99	0.25		10.98	1.23	0.00	0.000	0.000
2/28/1993	3.89	2.23	0.57		11.09	1.29	0.00	0.000	0.000
3/31/1993	5.26	10.46	1.99		11.25	1.61	0.00	0.000	0.000
4/30/1993	4.43	0.83	0.19		11.39	1.64	0.00	0.000	0.000
5/31/1993	5.08	0.99	0.20		11.54	1.67	0.00	0.000	0.000
6/30/1993	4.82	1.25	0.26		11.69	1.71	0.00	0.000	0.000
7/31/1993	4.78	0.84	0.18		11.84	1.73	0.00	0.000	0.000
8/31/1993	4.14	1.25	0.30		11.97	1.77	0.00	0.000	0.000
9/30/1993	4.44	0.87	0.20		12.10	1.80	0.00	0.000	0.000
10/31/1993	4.17	0.80	0.19		12.23	1.82	0.00	0.000	0.000
11/30/1993	3.90	0.85	0.22		12.34	1.85	0.00	0.000	0.000
12/31/1993	4.38	0.65	0.15		12.48	1.87	0.00	0.000	0.000
1/31/1994	3.58	0.58	0.16		12.59	1.89	0.00	0.000	0.000
2/28/1994	3.96	0.50	0.13		12.70	1.90	0.00	0.000	0.000
3/31/1994	3.94	1.68	0.43		12.82	1.95	0.00	0.000	0.000
4/30/1994	3.99	1.46	0.36		12.94	1.99	0.00	0.000	0.000
5/31/1994	5.50	7.31	1.33		13.11	2.22	0.00	0.000	0.000
6/30/1994	4.48	9.43	2.10		13.25	2.50	0.00	0.000	0.000
7/31/1994	8.26	22.20	2.69		13.50	3.19	0.00	0.000	0.000
8/31/1994	11.05	25.85	2.34		13.85	3.99	0.00	0.000	0.000
9/30/1994	8.54	24.43	2.86		14.10	4.73	0.00	0.000	0.000
10/31/1994	8.32	25.33	3.04		14.36	5.51	0.00	0.000	0.000
11/30/1994	10.37	28.13	2.71		14.67	6.36	0.00	0.000	0.000
12/31/1994	9.71	32.84	3.38		14.97	7.37	0.00	0.000	0.000
1/31/1995	8.91	32.49	3.64		15.25	8.38	0.00	0.000	0.000
2/28/1995	9.16	32.83	3.59		15.51	9.30	0.00	0.000	0.000
3/31/1995	8.24	28.26	3.43		15.76	10.18	0.00	0.000	0.000
4/30/1995	8.04	30.14	3.75		16.00	11.08	0.00	0.000	0.000
5/31/1995	7.31	29.40	4.02		16.23	11.99	0.00	0.000	0.000

Date	Oil Rate (CD) m3/d	Water Rate (CD) m3/d	Water Oil Ratio m3/m3	Water Inj Rate (CD) m3/d	Cum Oil Prod Km3	Cum Water Prod Km3	Cum Water Inj Km3	Voidage Replacement Ratio	Cum Voidage Replacemt Ratio
6/30/1995	6.43	31.55	4.91		16.42	12.94	0.00	0.000	0.000
7/31/1995	6.64	28.97	4.36		16.63	13.84	0.00	0.000	0.000
8/31/1995	5.78	27.62	4.78	50.68	16.81	14.69	1.57	1.730	0.080
9/30/1995	4.97	25.11	5.05	22.44	16.96	15.45	2.24	0.845	0.110
10/31/1995	4.87	22.32	4.58	22.19	17.11	16.14	2.93	0.935	0.139
11/30/1995	5.20	30.37	5.84	19.23	17.26	17.05	3.51	0.603	0.159
12/31/1995	5.17	30.01	5.81	13.51	17.42	17.98	3.93	0.429	0.171
1/31/1996	5.31	30.91	5.82	18.46	17.59	18.94	4.50	0.569	0.187
2/29/1996	5.04	26.09	5.17	18.28	17.73	19.69	5.03	0.664	0.203
3/31/1996	5.14	30.58	5.95	18.98	17.89	20.64	5.62	0.592	0.218
4/30/1996	5.26	30.73	5.84	17.06	18.05	21.56	6.13	0.529	0.229
5/31/1996	4.84	25.71	5.31	4.11	18.20	22.36	6.26	0.151	0.227
6/30/1996	4.62	29.94	6.49	15.67	18.34	23.26	6.73	0.501	0.236
7/31/1996	3.66	29.84	8.16	15.07	18.45	24.18	7.20	0.488	0.244
8/31/1996	5.79	29.42	5.08	14.68	18.63	25.10	7.65	0.472	0.251
9/30/1996	6.89	28.62	4.15	13.83	18.84	25.95	8.07	0.452	0.257
10/31/1996	5.79	27.70	4.79	11.91	19.02	26.81	8.43	0.405	0.261
11/30/1996	4.75	29.56	6.22	12.65	19.16	27.70	8.81	0.409	0.265
12/31/1996	5.26	30.00	5.70	12.38	19.33	28.63	9.20	0.393	0.269
1/31/1997	5.14	27.77	5.40	12.79	19.48	29.49	9.59	0.437	0.273
2/28/1997	4.88	27.75	5.68	10.75	19.62	30.27	9.89	0.369	0.275
3/31/1997	3.65	30.54	8.36	12.32	19.73	31.21	10.28	0.390	0.278
4/30/1997	3.95	31.69	8.02	12.07	19.85	32.17	10.64	0.368	0.281
5/31/1997	3.86	30.30	7.86	12.44	19.97	33.10	11.02	0.396	0.284
6/30/1997	3.31	23.56	7.13	12.83	20.07	33.81	11.41	0.523	0.288
7/31/1997	2.90	30.07	10.38	12.10	20.16	34.74	11.78	0.392	0.290
8/31/1997	2.93	30.72	10.48	12.92	20.25	35.70	12.19	0.409	0.293
9/30/1997	3.03	31.25	10.32	13.06	20.34	36.63	12.58	0.407	0.296
10/31/1997	3.02	29.81	9.88	13.62	20.44	37.56	13.00	0.444	0.299
11/30/1997	3.08	30.29	9.82	12.42	20.53	38.47	13.37	0.398	0.301
12/31/1997	3.14	30.28	9.65	11.93	20.63	39.41	13.74	0.383	0.303
1/31/1998	2.70	28.29	10.46	12.06	20.71	40.28	14.12	0.415	0.305
2/28/1998	2.37	26.46	11.16	8.44	20.78	41.02	14.35	0.311	0.305
3/31/1998	2.07	26.68	12.91	9.15	20.84	41.85	14.64	0.335	0.306
4/30/1998	2.03	27.90	13.72	12.35	20.90	42.69	15.01	0.433	0.308
5/31/1998	1.79	28.35	15.83	10.55	20.96	43.57	15.33	0.366	0.309
6/30/1998	1.66	26.70	16.09	9.31	21.01	44.37	15.61	0.342	0.310
7/31/1998	1.44	29.22	20.24	9.65	21.05	45.27	15.91	0.326	0.310
8/31/1998	0.78	26.99	34.57	7.00	21.08	46.11	16.13	0.257	0.309
9/30/1998	0.69	22.41	32.71	7.71	21.10	46.78	16.36	0.341	0.309
10/31/1998	1.38	25.64	18.59	9.70	21.14	47.58	16.66	0.372	0.310
11/30/1998	3.69	24.18	6.56	9.82	21.25	48.30	16.96	0.389	0.311
12/31/1998	3.92	26.21	6.68	9.41	21.37	49.11	17.25	0.344	0.312
1/31/1999	3.40	24.91	7.32	9.68	21.48	49.89	17.55	0.374	0.313
2/28/1999	3.62	28.11	7.76	9.86	21.58	50.67	17.82	0.338	0.313
3/31/1999	3.65	28.02	7.68	8.94	21.69	51.54	18.10	0.307	0.313
4/30/1999	3.18	25.77	8.10	9.54	21.79	52.32	18.39	0.357	0.314
5/31/1999	3.16	24.61	7.78	9.31	21.89	53.08	18.68	0.365	0.314

Date	Oil Rate (CD) m3/d	Water Rate (CD) m3/d	Water Oil Ratio m3/m3	Water Inj Rate (CD) m3/d	Cum Oil Prod Km3	Cum Water Prod Km3	Cum Water Inj Km3	Voidage Replacement Ratio	Cum Voidage Replacemt Ratio
6/30/1999	2.25	25.74	11.42	9.49	21.95	53.85	18.96	0.359	0.315
7/31/1999	2.06	26.27	12.76	9.49	22.02	54.67	19.25	0.353	0.315
8/31/1999	1.88	24.64	13.09	9.27	22.08	55.43	19.54	0.368	0.316
9/30/1999	1.99	26.09	13.12		22.13	56.21	19.54	0.000	0.312
10/31/1999	2.02	25.25	12.49	9.10	22.20	56.99	19.82	0.352	0.313
11/30/1999	1.98	25.23	12.78	9.44	22.26	57.75	20.11	0.366	0.313
12/31/1999	1.95	25.85	13.29	9.51	22.32	58.55	20.40	0.360	0.314
1/31/2000	1.87	27.31	14.57	9.35	22.38	59.40	20.69	0.336	0.314
2/29/2000	1.90	26.21	13.77	8.91	22.43	60.16	20.95	0.333	0.314
3/31/2000	2.00	25.96	12.97	9.23	22.49	60.96	21.24	0.348	0.315
4/30/2000	1.86	25.86	13.89	9.63	22.55	61.74	21.52	0.365	0.315
5/31/2000	2.00	26.92	13.43	9.53	22.61	62.57	21.82	0.347	0.316
6/30/2000	1.69	25.46	15.03	9.57	22.66	63.34	22.11	0.369	0.316
7/31/2000	1.51	26.03	17.22	9.96	22.71	64.15	22.42	0.377	0.317
8/31/2000	1.52	25.64	16.91	9.62	22.75	64.94	22.71	0.369	0.318
9/30/2000	1.41	25.84	18.33	9.65	22.80	65.72	23.00	0.367	0.318
10/31/2000	1.40	24.97	17.84	9.32	22.84	66.49	23.29	0.367	0.319
11/30/2000	1.52	24.83	16.28	9.55	22.89	67.23	23.58	0.378	0.319
12/31/2000	1.36	24.78	18.24	9.49	22.93	68.00	23.87	0.377	0.320
1/31/2001	1.33	24.23	18.21	9.51	22.97	68.75	24.17	0.386	0.321
2/28/2001	1.41	24.04	17.04	9.64	23.01	69.43	24.44	0.394	0.321
3/31/2001	1.35	23.69	17.48	9.40	23.05	70.16	24.73	0.390	0.322
4/30/2001	1.31	23.87	18.18	8.26	23.09	70.88	24.98	0.340	0.322
5/31/2001	1.33	23.13	17.36	9.03	23.13	71.59	25.26	0.384	0.323
6/30/2001	1.42	23.05	16.27	8.59	23.17	72.29	25.51	0.366	0.323
7/31/2001	1.32	21.65	16.41	8.68	23.22	72.96	25.78	0.394	0.324
8/31/2001	1.32	19.35	14.68	9.91	23.26	73.56	26.09	0.502	0.325
9/30/2001	1.20	16.21	13.54	8.80	23.29	74.04	26.36	0.532	0.326
10/31/2001	1.15	15.90	13.83	9.01	23.33	74.54	26.63	0.555	0.328
11/30/2001	0.99	10.30	10.43	7.16	23.36	74.84	26.85	0.676	0.329
12/31/2001	1.02	11.72	11.50	9.96	23.39	75.21	27.16	0.829	0.331
1/31/2002	1.02	11.60	11.33	10.01	23.42	75.57	27.47	0.841	0.334
2/28/2002	1.05	11.38	10.84	9.51	23.45	75.89	27.73	0.814	0.335
3/31/2002	1.18	11.92	10.08	9.36	23.49	76.26	28.02	0.764	0.337
4/30/2002	1.21	12.37	10.23	9.79	23.52	76.63	28.32	0.770	0.339
5/31/2002	1.18	12.90	10.96	9.95	23.56	77.03	28.63	0.751	0.341
6/30/2002	1.11	13.17	11.88	10.01	23.59	77.42	28.93	0.742	0.343
7/31/2002	1.07	13.71	12.77	6.32	23.63	77.85	29.12	0.450	0.344
8/31/2002	1.10	18.50	16.79	4.93	23.66	78.42	29.28	0.262	0.343
9/30/2002	1.14	21.60	18.89	7.87	23.69	79.07	29.51	0.359	0.343
10/31/2002	0.88	25.34	28.67	8.85	23.72	79.85	29.79	0.346	0.343
11/30/2002	0.82	27.03	32.89	9.65	23.75	80.66	30.08	0.354	0.344
12/31/2002	0.86	25.36	29.34	9.14	23.77	81.45	30.36	0.357	0.344
1/31/2003	0.85	25.14	29.57	9.51	23.80	82.23	30.65	0.375	0.344
2/28/2003	0.88	25.19	28.79	9.64	23.82	82.94	30.92	0.379	0.344
3/31/2003	0.38	28.05	74.64	9.30	23.84	83.80	31.21	0.330	0.344
4/30/2003	0.56	33.33	58.99	8.64	23.85	84.80	31.47	0.258	0.343
5/31/2003	0.64	34.74	54.25	8.48	23.87	85.88	31.73	0.243	0.342

Date	Oil Rate (CD) m3/d	Water Rate (CD) m3/d	Water Oil Ratio m3/m3	Water Inj Rate (CD) m3/d	Cum Oil Prod Km3	Cum Water Prod Km3	Cum Water Inj Km3	Voidage Replacement Ratio	Cum Voidage Replacemt Ratio
6/30/2003	0.65	34.77	53.49	8.05	23.89	86.92	31.98	0.230	0.341
7/31/2003	0.69	33.93	49.49	9.14	23.91	87.98	32.26	0.268	0.340
8/31/2003	0.94	32.57	34.82	10.57	23.94	88.99	32.59	0.322	0.340
9/30/2003	0.93	27.58	29.66	10.86	23.97	89.81	32.91	0.390	0.340
10/31/2003	0.94	28.44	30.20	10.93	24.00	90.70	33.25	0.381	0.341
11/30/2003	0.73	23.14	31.55	10.81	24.02	91.39	33.58	0.463	0.341
12/31/2003	0.91	27.41	29.97	10.25	24.05	92.24	33.89	0.370	0.342
1/31/2004	0.91	27.75	30.40	10.90	24.08	93.10	34.23	0.389	0.342
2/29/2004	0.91	27.32	30.12	10.80	24.10	93.89	34.54	0.392	0.342
3/31/2004	0.95	27.82	29.44	11.43	24.13	94.75	34.90	0.407	0.343
4/30/2004	0.90	27.37	30.47	11.30	24.16	95.58	35.24	0.409	0.344
5/31/2004	1.06	28.47	26.91	11.06	24.19	96.46	35.58	0.384	0.344
6/30/2004	1.43	28.56	19.95	10.89	24.24	97.31	35.91	0.376	0.344
7/31/2004	1.48	28.92	19.59	10.96	24.28	98.21	36.25	0.374	0.344
8/31/2004	1.49	30.30	20.38	10.70	24.33	99.15	36.58	0.348	0.344
9/30/2004	1.45	26.01	18.00	10.47	24.37	99.93	36.89	0.396	0.345
10/31/2004	1.32	24.92	18.84	1.72	24.41	100.70	36.95	0.068	0.343
11/30/2004	1.41	29.59	21.01	8.34	24.45	101.59	37.20	0.278	0.342
12/31/2004	1.35	28.60	21.19	10.88	24.50	102.48	37.53	0.375	0.343
1/31/2005	1.51	35.19	23.31	10.86	24.54	103.57	37.87	0.305	0.342
2/28/2005	1.52	34.18	22.52	10.24	24.59	104.53	38.16	0.296	0.342
3/31/2005	1.47	32.37	22.03	10.18	24.63	105.53	38.47	0.311	0.342
4/30/2005	1.38	31.25	22.64	10.77	24.67	106.47	38.80	0.340	0.342
5/31/2005	1.29	29.30	22.79	10.57	24.71	107.37	39.12	0.356	0.342
6/30/2005	1.29	31.22	24.14	10.38	24.75	108.31	39.43	0.328	0.342
7/31/2005	1.32	29.68	22.44	10.19	24.79	109.23	39.75	0.339	0.341
8/31/2005	1.32	25.74	19.53	10.35	24.83	110.03	40.07	0.396	0.342
9/30/2005	1.32	25.20	19.12	10.80	24.87	110.79	40.40	0.422	0.342
10/31/2005	1.30	25.11	19.39	10.14	24.91	111.56	40.71	0.398	0.343
11/30/2005	1.30	24.73	19.02	10.50	24.95	112.31	41.02	0.418	0.343
12/31/2005	1.31	24.60	18.83	10.04	24.99	113.07	41.34	0.402	0.344
1/31/2006	1.27	24.27	19.14	10.56	25.03	113.82	41.66	0.429	0.344
2/28/2006	1.25	23.11	18.49	10.53	25.07	114.47	41.96	0.449	0.345
3/31/2006	1.20	23.38	19.46	10.18	25.10	115.19	42.27	0.429	0.345
4/30/2006	1.40	23.03	16.49	7.57	25.15	115.88	42.50	0.323	0.345
5/31/2006	1.34	21.72	16.20	8.96	25.19	116.56	42.78	0.405	0.345
6/30/2006	1.31	22.79	17.40	10.01	25.23	117.24	43.08	0.432	0.346
7/31/2006	1.29	22.50	17.46	10.13	25.27	117.94	43.39	0.443	0.346
8/31/2006	1.25	22.68	18.15	10.00	25.31	118.64	43.70	0.434	0.347
9/30/2006	1.30	22.63	17.41	9.75	25.34	119.32	44.00	0.424	0.347
10/31/2006	1.25	22.70	18.09		25.38	120.02	44.00	0.000	0.345
11/30/2006	1.28	22.93	17.94		25.42	120.71	44.00	0.000	0.344
12/31/2006	1.22	22.78	18.73	0.43	25.46	121.42	44.01	0.018	0.342
1/31/2007	1.19	22.30	18.74	7.76	25.50	122.11	44.25	0.343	0.342
2/28/2007	1.21	21.47	17.73	10.78	25.53	122.71	44.55	0.494	0.342
3/31/2007	1.16	21.07	18.17	10.70	25.57	123.36	44.88	0.500	0.343
4/30/2007	1.14	20.95	18.37	10.73	25.60	123.99	45.20	0.504	0.344
5/31/2007	1.14	20.72	18.17	10.61	25.64	124.63	45.53	0.504	0.345

Date	Oil Rate (CD) m3/d	Water Rate (CD) m3/d	Water Oil Ratio m3/m3	Water Inj Rate (CD) m3/d	Cum Oil Prod Km3	Cum Water Prod Km3	Cum Water Inj Km3	Voidage Replacement Ratio	Cum Voidage Replacemt Ratio
6/30/2007	1.11	20.23	18.26	10.38	25.67	125.24	45.84	0.505	0.346
7/31/2007	1.10	20.34	18.41	10.47	25.70	125.87	46.17	0.507	0.346
8/31/2007	1.11	20.24	18.24	9.67	25.74	126.50	46.47	0.470	0.347
9/30/2007	1.10	20.21	18.46	10.50	25.77	127.11	46.78	0.512	0.348
10/31/2007	1.12	20.52	18.36	10.01	25.81	127.74	47.09	0.480	0.348
11/30/2007	1.12	21.05	18.74	10.82	25.84	128.37	47.42	0.506	0.349
12/31/2007	1.12	20.57	18.38	10.74	25.87	129.01	47.75	0.514	0.350
1/31/2008	1.16	20.58	17.77	10.66	25.91	129.65	48.08	0.510	0.351
2/29/2008	1.12	19.99	17.89	10.27	25.94	130.23	48.38	0.506	0.351
3/31/2008	1.12	20.06	17.97	10.66	25.98	130.85	48.71	0.523	0.352
4/30/2008	1.14	19.49	17.07	10.24	26.01	131.44	49.02	0.517	0.353
5/31/2008	1.14	18.70	16.35	9.79	26.05	132.01	49.32	0.515	0.353
6/30/2008	1.05	18.68	17.82	9.08	26.08	132.58	49.59	0.478	0.354
7/31/2008	1.19	20.74	17.47	10.21	26.11	133.22	49.91	0.484	0.355
8/31/2008	1.16	20.13	17.34	10.24	26.15	133.84	50.23	0.500	0.355
9/30/2008	1.20	20.86	17.38	10.10	26.19	134.47	50.53	0.476	0.356
10/31/2008	1.18	20.90	17.67	10.11	26.22	135.12	50.84	0.476	0.356
11/30/2008	1.22	20.62	16.88	10.43	26.26	135.73	51.16	0.497	0.357
12/31/2008	1.20	20.54	17.12	10.38	26.30	136.37	51.48	0.497	0.358
1/31/2009	1.13	19.86	17.54	10.37	26.33	136.99	51.80	0.513	0.358
2/28/2009	1.14	20.49	17.98	9.78	26.36	137.56	52.07	0.470	0.359
3/31/2009	1.18	20.51	17.39	10.15	26.40	138.20	52.39	0.487	0.359
4/30/2009	0.92	14.24	15.43	3.08	26.43	138.62	52.48	0.212	0.359
5/31/2009	0.88	14.25	16.24	1.98	26.46	139.07	52.54	0.137	0.358
6/30/2009	1.07	21.17	19.78	10.68	26.49	139.70	52.86	0.497	0.359
7/31/2009	1.08	21.90	20.26	10.53	26.52	140.38	53.19	0.474	0.359
8/31/2009	1.07	20.61	19.34	6.79	26.55	141.02	53.40	0.324	0.359
9/30/2009	1.03	20.84	20.14	10.36	26.59	141.64	53.71	0.490	0.360
10/31/2009	1.16	20.97	18.05	10.03	26.62	142.29	54.02	0.471	0.360
11/30/2009	1.10	20.11	18.28	10.00	26.65	142.90	54.32	0.489	0.361
12/31/2009	1.08	19.01	17.54	10.63	26.69	143.49	54.65	0.550	0.361
1/31/2010	1.06	19.19	18.03	8.55	26.72	144.08	54.92	0.438	0.362
2/28/2010	1.08	19.41	17.97	9.65	26.75	144.62	55.19	0.489	0.362
3/31/2010	1.15	19.32	16.77	9.27	26.79	145.22	55.47	0.472	0.363
4/30/2010	1.10	18.38	16.66	9.93	26.82	145.77	55.77	0.531	0.363
5/31/2010	1.08	18.42	17.12	10.73	26.85	146.35	56.10	0.573	0.364
6/30/2010	1.12	17.07	15.29	8.78	26.89	146.86	56.37	0.505	0.365
7/31/2010	1.13	17.44	15.49	7.44	26.92	147.40	56.60	0.419	0.365
8/31/2010	1.04	16.64	16.00	2.57	26.95	147.91	56.68	0.152	0.364
9/30/2010	1.12	18.39	16.44	8.70	26.99	148.47	56.94	0.465	0.364
10/31/2010	0.69	13.44	19.52	7.63	27.01	148.88	57.18	0.559	0.365
11/30/2010	1.08	18.91	17.48	8.83	27.04	149.45	57.44	0.460	0.365
12/31/2010	1.10	17.15	15.64	8.71	27.08	149.98	57.71	0.499	0.366
1/31/2011	1.05	17.63	16.74	8.01	27.11	150.53	57.96	0.446	0.366
2/28/2011	1.17	17.55	15.03	5.24	27.14	151.02	58.10	0.293	0.366
3/31/2011	1.10	18.12	16.40	7.11	27.17	151.58	58.33	0.386	0.366
4/30/2011	1.12	17.54	15.66	6.41	27.21	152.11	58.52	0.359	0.366
5/31/2011	1.09	16.22	14.92	4.79	27.24	152.61	58.67	0.290	0.366

Date	Oil Rate (CD) m3/d	Water Rate (CD) m3/d	Water Oil Ratio m3/m3	Water Inj Rate (CD) m3/d	Cum Oil Prod Km3	Cum Water Prod Km3	Cum Water Inj Km3	Voidage Replacement Ratio	Cum Voidage Replacemt Ratio
6/30/2011	1.09	15.65	14.36	5.00	27.27	153.08	58.82	0.313	0.365
7/31/2011	1.13	16.48	14.57	4.70	27.31	153.59	58.96	0.279	0.365
8/31/2011	1.06	15.08	14.21	2.02	27.34	154.06	59.02	0.131	0.364
9/30/2011	1.10	13.85	12.62	2.19	27.38	154.47	59.09	0.155	0.364
10/31/2011	0.79	11.05	14.00	4.88	27.40	154.82	59.24	0.433	0.364
11/30/2011	1.13	16.23	14.38	5.78	27.43	155.30	59.41	0.349	0.364
12/31/2011	0.92	13.46	14.69	6.70	27.46	155.72	59.62	0.488	0.364

Pattern: 12-28-010-29W1 Set: Kola Unit #1

Oil Formation Vol. Factor : 1.05 m3/m3

Water Formation Vol Factor : 1.00 m3/m3

Water / Oil Ratio : 8.33 m3/m3

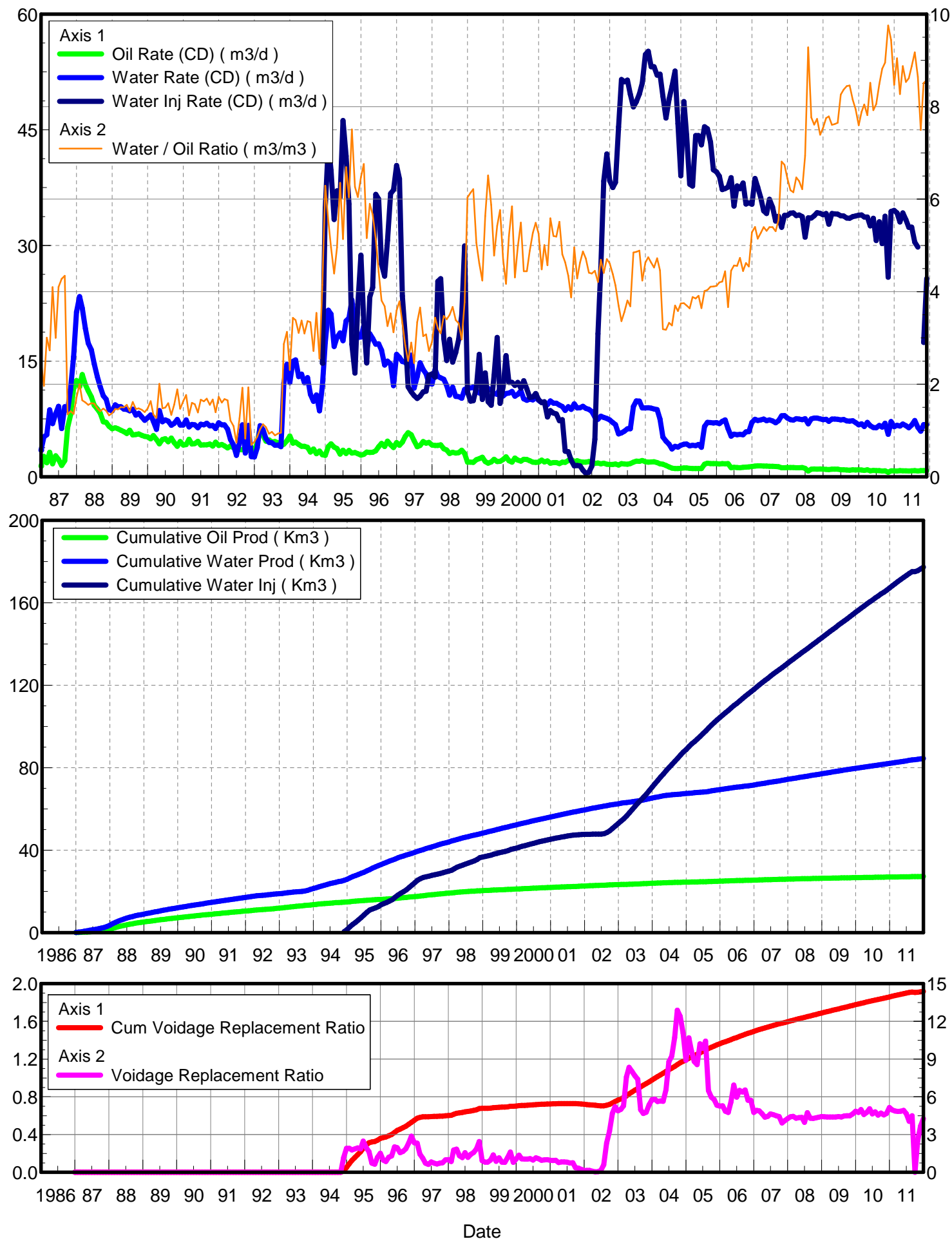
February 20, 2012

Operator: TUNDRA_OIL_&_GAS_LIMITED

Oil Rate (CD) : 0.80 m3/d

Water Rate (CD) : 6.68 m3/d

Water Inj Rate (CD) : 29.54 m3/d



Date	Oil Rate (CD) m3/d	Water Rate (CD) m3/d	Water Oil Ratio m3/m3	Water Inj Rate (CD) m3/d	Cum Oil Prod Km3	Cum Water Prod Km3	Cum Water Inj Km3	Voidage Replacement Ratio	Cum Voidage Replacemnt Ratio
12/31/1986	1.38	3.43	2.49		0.04	0.11	0.00	0.000	0.000
1/31/1987	2.64	5.18	1.96		0.12	0.27	0.00	0.000	0.000
2/28/1987	1.81	5.46	3.01		0.18	0.42	0.00	0.000	0.000
3/31/1987	3.18	8.68	2.73		0.27	0.69	0.00	0.000	0.000
4/30/1987	1.68	6.88	4.10		0.32	0.90	0.00	0.000	0.000
5/31/1987	2.72	8.17	3.00		0.41	1.15	0.00	0.000	0.000
6/30/1987	2.23	9.13	4.10		0.48	1.42	0.00	0.000	0.000
7/31/1987	1.46	6.25	4.28		0.52	1.62	0.00	0.000	0.000
8/31/1987	2.09	9.07	4.34		0.59	1.90	0.00	0.000	0.000
9/30/1987	6.39	8.63	1.35		0.78	2.16	0.00	0.000	0.000
10/31/1987	7.99	11.30	1.41		1.02	2.51	0.00	0.000	0.000
11/30/1987	11.47	15.56	1.36		1.37	2.97	0.00	0.000	0.000
12/31/1987	12.49	21.36	1.71		1.76	3.64	0.00	0.000	0.000
1/31/1988	11.68	23.36	2.00		2.12	4.36	0.00	0.000	0.000
2/29/1988	13.25	21.86	1.65		2.50	4.99	0.00	0.000	0.000
3/31/1988	11.95	19.23	1.61		2.87	5.59	0.00	0.000	0.000
4/30/1988	11.13	17.31	1.55		3.21	6.11	0.00	0.000	0.000
5/31/1988	10.36	16.45	1.59		3.53	6.62	0.00	0.000	0.000
6/30/1988	9.27	14.64	1.58		3.81	7.06	0.00	0.000	0.000
7/31/1988	8.80	13.00	1.48		4.08	7.46	0.00	0.000	0.000
8/31/1988	8.25	11.66	1.41		4.34	7.82	0.00	0.000	0.000
9/30/1988	7.13	10.50	1.47		4.55	8.14	0.00	0.000	0.000
10/31/1988	7.04	10.03	1.42		4.77	8.45	0.00	0.000	0.000
11/30/1988	6.54	8.68	1.33		4.96	8.71	0.00	0.000	0.000
12/31/1988	6.21	8.55	1.38		5.16	8.97	0.00	0.000	0.000
1/31/1989	6.36	9.32	1.46		5.35	9.26	0.00	0.000	0.000
2/28/1989	6.23	9.07	1.46		5.53	9.52	0.00	0.000	0.000
3/31/1989	6.04	9.08	1.50		5.71	9.80	0.00	0.000	0.000
4/30/1989	5.84	8.76	1.50		5.89	10.06	0.00	0.000	0.000
5/31/1989	5.62	8.73	1.55		6.06	10.33	0.00	0.000	0.000
6/30/1989	6.02	8.54	1.42		6.24	10.59	0.00	0.000	0.000
7/31/1989	5.41	8.75	1.62		6.41	10.86	0.00	0.000	0.000
8/31/1989	5.46	7.99	1.46		6.58	11.11	0.00	0.000	0.000
9/30/1989	5.56	8.23	1.48		6.75	11.35	0.00	0.000	0.000
10/31/1989	5.36	7.75	1.44		6.92	11.59	0.00	0.000	0.000
11/30/1989	5.23	7.30	1.40		7.07	11.81	0.00	0.000	0.000
12/31/1989	5.18	7.64	1.47		7.23	12.05	0.00	0.000	0.000
1/31/1990	4.91	8.01	1.63		7.38	12.30	0.00	0.000	0.000
2/28/1990	5.34	7.18	1.34		7.53	12.50	0.00	0.000	0.000
3/31/1990	4.82	6.13	1.27		7.68	12.69	0.00	0.000	0.000
4/30/1990	4.27	8.57	2.01		7.81	12.95	0.00	0.000	0.000
5/31/1990	4.83	7.14	1.48		7.96	13.17	0.00	0.000	0.000
6/30/1990	4.92	7.37	1.50		8.11	13.39	0.00	0.000	0.000
7/31/1990	4.54	7.21	1.59		8.25	13.61	0.00	0.000	0.000
8/31/1990	5.01	6.67	1.33		8.41	13.82	0.00	0.000	0.000
9/30/1990	4.44	6.91	1.56		8.54	14.03	0.00	0.000	0.000
10/31/1990	3.94	7.43	1.89		8.66	14.26	0.00	0.000	0.000
11/30/1990	4.56	6.69	1.47		8.80	14.46	0.00	0.000	0.000

Date	Oil Rate (CD) m3/d	Water Rate (CD) m3/d	Water Oil Ratio m3/m3	Water Inj Rate (CD) m3/d	Cum Oil Prod Km3	Cum Water Prod Km3	Cum Water Inj Km3	Voidage Replacement Ratio	Cum Voidage Replacemt Ratio
12/31/1990	4.10	6.70	1.63		8.92	14.67	0.00	0.000	0.000
1/31/1991	4.16	7.36	1.77		9.05	14.89	0.00	0.000	0.000
2/28/1991	4.86	6.45	1.33		9.19	15.07	0.00	0.000	0.000
3/31/1991	4.24	6.78	1.60		9.32	15.28	0.00	0.000	0.000
4/30/1991	4.30	6.74	1.57		9.45	15.49	0.00	0.000	0.000
5/31/1991	4.58	6.36	1.39		9.59	15.68	0.00	0.000	0.000
6/30/1991	4.10	6.81	1.66		9.71	15.89	0.00	0.000	0.000
7/31/1991	4.14	6.73	1.63		9.84	16.10	0.00	0.000	0.000
8/31/1991	4.13	6.95	1.69		9.97	16.31	0.00	0.000	0.000
9/30/1991	4.25	6.60	1.55		10.10	16.51	0.00	0.000	0.000
10/31/1991	3.98	6.65	1.67		10.22	16.72	0.00	0.000	0.000
11/30/1991	4.48	6.24	1.39		10.36	16.90	0.00	0.000	0.000
12/31/1991	4.05	7.00	1.73		10.48	17.12	0.00	0.000	0.000
1/31/1992	4.20	6.72	1.60		10.61	17.33	0.00	0.000	0.000
2/29/1992	4.01	6.72	1.68		10.73	17.52	0.00	0.000	0.000
3/31/1992	3.73	6.17	1.65		10.84	17.72	0.00	0.000	0.000
4/30/1992	3.97	4.83	1.22		10.96	17.86	0.00	0.000	0.000
5/31/1992	3.75	4.11	1.09		11.08	17.99	0.00	0.000	0.000
6/30/1992	3.74	2.76	0.74		11.19	18.07	0.00	0.000	0.000
7/31/1992	3.51	4.43	1.26		11.30	18.21	0.00	0.000	0.000
8/31/1992	3.49	6.72	1.92		11.41	18.42	0.00	0.000	0.000
9/30/1992	3.74	3.07	0.82		11.52	18.51	0.00	0.000	0.000
10/31/1992	3.45	6.66	1.93		11.63	18.71	0.00	0.000	0.000
11/30/1992	3.79	2.61	0.69		11.74	18.79	0.00	0.000	0.000
12/31/1992	3.38	2.56	0.76		11.85	18.87	0.00	0.000	0.000
1/31/1993	4.34	3.75	0.87		11.98	18.99	0.00	0.000	0.000
2/28/1993	6.44	6.63	1.03		12.16	19.17	0.00	0.000	0.000
3/31/1993	5.36	6.08	1.13		12.33	19.36	0.00	0.000	0.000
4/30/1993	4.61	4.95	1.07		12.47	19.51	0.00	0.000	0.000
5/31/1993	4.78	4.44	0.93		12.61	19.65	0.00	0.000	0.000
6/30/1993	4.52	4.39	0.97		12.75	19.78	0.00	0.000	0.000
7/31/1993	4.56	4.08	0.89		12.89	19.91	0.00	0.000	0.000
8/31/1993	4.41	4.11	0.93		13.03	20.03	0.00	0.000	0.000
9/30/1993	4.08	3.88	0.95		13.15	20.15	0.00	0.000	0.000
10/31/1993	4.23	12.13	2.87		13.28	20.53	0.00	0.000	0.000
11/30/1993	4.66	14.60	3.13		13.42	20.96	0.00	0.000	0.000
12/31/1993	5.29	12.22	2.31		13.58	21.34	0.00	0.000	0.000
1/31/1994	4.36	14.96	3.43		13.72	21.81	0.00	0.000	0.000
2/28/1994	4.48	15.16	3.38		13.85	22.23	0.00	0.000	0.000
3/31/1994	4.18	13.00	3.11		13.98	22.63	0.00	0.000	0.000
4/30/1994	3.94	13.30	3.38		14.09	23.03	0.00	0.000	0.000
5/31/1994	3.94	12.19	3.10		14.22	23.41	0.00	0.000	0.000
6/30/1994	3.82	12.85	3.36		14.33	23.80	0.00	0.000	0.000
7/31/1994	3.20	10.68	3.34		14.43	24.13	0.00	0.000	0.000
8/31/1994	3.60	9.76	2.71		14.54	24.43	0.00	0.000	0.000
9/30/1994	3.00	10.61	3.54		14.63	24.75	0.00	0.000	0.000
10/31/1994	3.34	8.54	2.55		14.73	25.01	0.00	0.000	0.000
11/30/1994	2.84	11.78	4.15	14.73	14.82	25.37	0.44	1.169	0.015

Date	Oil Rate (CD) m3/d	Water Rate (CD) m3/d	Water Oil Ratio m3/m3	Water Inj Rate (CD) m3/d	Cum Oil Prod Km3	Cum Water Prod Km3	Cum Water Inj Km3	Voidage Replacement Ratio	Cum Voidage Replacemt Ratio
12/31/1994	2.77	17.44	6.29	34.87	14.90	25.91	1.52	1.912	0.050
1/31/1995	3.91	21.59	5.52	43.28	15.03	26.58	2.86	1.905	0.093
2/28/1995	4.26	21.10	4.96	39.73	15.15	27.17	3.98	1.779	0.126
3/31/1995	3.84	16.88	4.39	33.36	15.26	27.69	5.01	1.854	0.156
4/30/1995	3.65	18.09	4.96	37.09	15.37	28.23	6.12	1.938	0.187
5/31/1995	2.94	18.67	6.35	36.26	15.47	28.81	7.25	1.858	0.218
6/30/1995	3.43	17.64	5.14	46.19	15.57	29.34	8.63	2.478	0.255
7/31/1995	3.02	20.21	6.69	41.61	15.66	29.97	9.92	1.974	0.288
8/31/1995	3.41	20.58	6.04	35.38	15.77	30.61	11.02	1.640	0.313
9/30/1995	3.05	22.93	7.51	17.19	15.86	31.29	11.54	0.722	0.322
10/31/1995	3.15	19.77	6.27	13.44	15.96	31.91	11.95	0.650	0.327
11/30/1995	2.99	18.07	6.04	22.38	16.05	32.45	12.62	1.182	0.340
12/31/1995	2.80	18.13	6.47	28.74	16.13	33.01	13.51	1.518	0.359
1/31/1996	2.90	19.58	6.76	19.99	16.22	33.62	14.13	0.979	0.369
2/29/1996	3.19	16.44	5.16	14.76	16.32	34.10	14.56	0.850	0.375
3/31/1996	3.15	18.55	5.90	23.30	16.41	34.67	15.28	1.197	0.388
4/30/1996	3.16	17.92	5.67	24.53	16.51	35.21	16.02	1.302	0.401
5/31/1996	3.35	17.18	5.14	36.63	16.61	35.74	17.16	2.018	0.423
6/30/1996	3.89	17.24	4.43	36.00	16.73	36.26	18.24	1.960	0.444
7/31/1996	4.31	16.42	3.81	27.56	16.86	36.77	19.09	1.560	0.458
8/31/1996	3.93	14.49	3.68	26.00	16.98	37.22	19.90	1.664	0.472
9/30/1996	4.60	14.99	3.26	30.66	17.12	37.67	20.82	1.878	0.488
10/31/1996	4.13	14.60	3.53	36.74	17.25	38.12	21.95	2.325	0.509
11/30/1996	3.79	11.82	3.12	37.18	17.36	38.47	23.07	2.879	0.530
12/31/1996	4.42	15.87	3.59	40.36	17.50	38.96	24.32	2.354	0.552
1/31/1997	4.08	15.47	3.79	38.64	17.63	39.44	25.52	2.321	0.573
2/28/1997	4.49	14.95	3.33	23.44	17.75	39.86	26.18	1.443	0.582
3/31/1997	5.24	14.86	2.84	18.29	17.91	40.32	26.74	1.117	0.588
4/30/1997	5.72	14.32	2.50	11.64	18.09	40.75	27.09	0.729	0.589
5/31/1997	5.44	15.77	2.90	11.01	18.26	41.24	27.43	0.635	0.590
6/30/1997	4.67	11.48	2.46	10.52	18.40	41.59	27.75	0.819	0.592
7/31/1997	3.89	12.98	3.34	10.14	18.52	41.99	28.06	0.719	0.593
8/31/1997	4.04	14.79	3.66	10.44	18.64	42.45	28.39	0.654	0.593
9/30/1997	4.57	13.88	3.04	11.00	18.78	42.86	28.72	0.723	0.595
10/31/1997	4.34	13.35	3.08	11.10	18.91	43.28	29.06	0.760	0.596
11/30/1997	4.46	12.11	2.72	13.16	19.05	43.64	29.46	0.982	0.599
12/31/1997	4.12	12.03	2.92	13.35	19.17	44.01	29.87	1.010	0.603
1/31/1998	4.05	13.93	3.44	12.90	19.30	44.45	30.27	0.854	0.605
2/28/1998	4.06	13.03	3.21	25.33	19.41	44.81	30.98	1.784	0.614
3/31/1998	4.14	12.82	3.10	25.70	19.54	45.21	31.77	1.833	0.625
4/30/1998	3.64	12.63	3.47	17.94	19.65	45.59	32.31	1.311	0.630
5/31/1998	3.48	11.84	3.41	15.06	19.76	45.95	32.78	1.172	0.634
6/30/1998	3.02	10.58	3.50	17.82	19.85	46.27	33.31	1.556	0.641
7/31/1998	3.17	11.63	3.67	14.87	19.95	46.63	33.78	1.185	0.645
8/31/1998	3.08	10.42	3.39	16.13	20.04	46.95	34.28	1.426	0.650
9/30/1998	3.13	10.39	3.32	17.79	20.14	47.27	34.81	1.575	0.656
10/31/1998	3.43	10.17	2.96	20.96	20.24	47.58	35.46	1.877	0.664
11/30/1998	3.00	11.32	3.77	29.93	20.33	47.92	36.36	2.455	0.676

Date	Oil Rate (CD) m3/d	Water Rate (CD) m3/d	Water Oil Ratio m3/m3	Water Inj Rate (CD) m3/d	Cum Oil Prod Km3	Cum Water Prod Km3	Cum Water Inj Km3	Voidage Replacement Ratio	Cum Voidage Replacemt Ratio
12/31/1998	1.90	11.47	6.04	11.01	20.39	48.28	36.70	0.915	0.677
1/31/1999	1.87	11.51	6.14	9.79	20.45	48.63	37.00	0.813	0.678
2/28/1999	1.87	11.63	6.22	9.85	20.50	48.96	37.28	0.809	0.679
3/31/1999	2.21	11.18	5.06	11.52	20.57	49.31	37.63	0.975	0.681
4/30/1999	2.35	10.87	4.62	15.89	20.64	49.63	38.11	1.376	0.685
5/31/1999	2.52	10.70	4.24	10.02	20.72	49.96	38.42	0.877	0.687
6/30/1999	1.98	11.16	5.64	13.48	20.78	50.30	38.83	1.148	0.690
7/31/1999	1.75	11.43	6.51	9.74	20.83	50.65	39.13	0.816	0.690
8/31/1999	1.92	11.26	5.88	9.27	20.89	51.00	39.41	0.784	0.691
9/30/1999	2.26	10.78	4.78	13.15	20.96	51.33	39.81	1.150	0.694
10/31/1999	1.97	10.68	5.42	18.06	21.02	51.66	40.37	1.605	0.699
11/30/1999	2.00	11.53	5.76	9.50	21.08	52.00	40.65	0.785	0.700
12/31/1999	2.23	10.47	4.69	11.67	21.15	52.33	41.02	1.050	0.702
1/31/2000	2.59	10.80	4.17	15.71	21.23	52.66	41.50	1.360	0.706
2/29/2000	2.09	10.86	5.20	12.24	21.29	52.98	41.86	1.068	0.708
3/31/2000	1.89	11.07	5.84	12.23	21.35	53.32	42.24	1.053	0.710
4/30/2000	2.42	10.44	4.31	11.83	21.42	53.63	42.59	1.062	0.712
5/31/2000	2.15	10.69	4.97	12.23	21.49	53.96	42.97	1.081	0.714
6/30/2000	2.03	11.13	5.49	11.49	21.55	54.30	43.32	0.980	0.716
7/31/2000	2.27	10.09	4.44	12.45	21.62	54.61	43.70	1.158	0.718
8/31/2000	2.23	9.91	4.44	11.37	21.69	54.92	44.05	1.077	0.720
9/30/2000	2.06	10.07	4.88	10.27	21.75	55.22	44.36	0.963	0.721
10/31/2000	1.89	9.96	5.27	10.34	21.81	55.53	44.68	0.983	0.723
11/30/2000	1.87	10.29	5.49	10.80	21.87	55.84	45.01	0.998	0.724
12/31/2000	1.88	9.90	5.26	10.00	21.93	56.15	45.32	0.957	0.725
1/31/2001	2.14	9.60	4.48	9.62	21.99	56.44	45.62	0.941	0.726
2/28/2001	1.92	9.60	5.01	9.73	22.05	56.71	45.89	0.958	0.727
3/31/2001	2.05	9.35	4.57	7.75	22.11	57.00	46.13	0.780	0.728
4/30/2001	1.76	9.82	5.59	8.58	22.16	57.30	46.39	0.831	0.728
5/31/2001	1.83	9.54	5.21	8.25	22.22	57.59	46.64	0.820	0.729
6/30/2001	1.84	9.53	5.19	8.16	22.27	57.88	46.89	0.810	0.729
7/31/2001	1.69	9.30	5.51	7.26	22.33	58.17	47.11	0.742	0.729
8/31/2001	1.89	9.11	4.81	7.39	22.38	58.45	47.34	0.765	0.729
9/30/2001	1.86	8.61	4.64	3.30	22.44	58.71	47.44	0.361	0.728
10/31/2001	2.09	9.09	4.34	3.25	22.51	58.99	47.54	0.335	0.726
11/30/2001	2.26	8.75	3.88	2.13	22.57	59.25	47.60	0.227	0.724
12/31/2001	1.91	9.45	4.96	1.40	22.63	59.54	47.65	0.140	0.721
1/31/2002	2.08	8.92	4.29	1.45	22.70	59.82	47.69	0.153	0.718
2/28/2002	1.93	8.94	4.63	1.40	22.75	60.07	47.73	0.147	0.716
3/31/2002	1.88	9.14	4.87	0.85	22.81	60.35	47.76	0.087	0.713
4/30/2002	1.88	8.86	4.72	0.43	22.86	60.62	47.77	0.046	0.711
5/31/2002	1.98	8.74	4.41	0.57	22.93	60.89	47.79	0.061	0.708
6/30/2002	1.93	8.46	4.39	1.35	22.98	61.14	47.83	0.149	0.706
7/31/2002	1.74	7.74	4.45	4.86	23.04	61.38	47.98	0.590	0.705
8/31/2002	1.77	7.45	4.21	18.54	23.09	61.62	48.55	2.330	0.711
9/30/2002	1.67	7.85	4.69	27.22	23.14	61.85	49.37	3.267	0.720
10/31/2002	1.74	7.68	4.41	38.34	23.20	62.09	50.56	4.686	0.735
11/30/2002	1.61	7.56	4.70	41.86	23.25	62.32	51.81	5.219	0.751

Date	Oil Rate (CD) m3/d	Water Rate (CD) m3/d	Water Oil Ratio m3/m3	Water Inj Rate (CD) m3/d	Cum Oil Prod Km3	Cum Water Prod Km3	Cum Water Inj Km3	Voidage Replacement Ratio	Cum Voidage Replacemt Ratio
12/31/2002	1.60	7.38	4.61	38.39	23.29	62.54	53.00	4.894	0.765
1/31/2003	1.61	7.03	4.38	37.50	23.34	62.76	54.17	5.002	0.779
2/28/2003	1.64	6.76	4.13	38.16	23.39	62.95	55.24	5.276	0.792
3/31/2003	1.50	5.55	3.70	45.38	23.44	63.12	56.64	7.585	0.810
4/30/2003	1.69	5.68	3.36	51.52	23.49	63.29	58.19	8.347	0.830
5/31/2003	1.66	5.90	3.56	51.22	23.54	63.48	59.78	8.025	0.850
6/30/2003	1.63	6.22	3.81	51.45	23.59	63.66	61.32	7.684	0.870
7/31/2003	1.69	6.22	3.68	49.60	23.64	63.86	62.86	7.399	0.889
8/31/2003	1.88	9.10	4.85	47.96	23.70	64.14	64.34	4.972	0.906
9/30/2003	2.02	9.82	4.86	48.63	23.76	64.43	65.80	4.674	0.923
10/31/2003	2.01	9.80	4.89	49.65	23.82	64.74	67.34	4.782	0.940
11/30/2003	2.10	8.92	4.24	51.08	23.88	65.00	68.87	5.362	0.958
12/31/2003	1.93	8.93	4.63	54.76	23.94	65.28	70.57	5.770	0.977
1/31/2004	1.89	8.95	4.74	55.17	24.00	65.56	72.28	5.809	0.997
2/29/2004	1.92	8.89	4.63	53.17	24.06	65.82	73.82	5.630	1.014
3/31/2004	1.95	8.80	4.52	53.17	24.12	66.09	75.47	5.681	1.033
4/30/2004	1.84	8.70	4.72	52.08	24.17	66.35	77.03	5.639	1.050
5/31/2004	1.68	7.48	4.46	52.22	24.23	66.58	78.65	6.556	1.069
6/30/2004	1.61	5.14	3.19	49.37	24.27	66.74	80.13	8.800	1.086
7/31/2004	1.45	4.61	3.18	46.52	24.32	66.88	81.58	9.243	1.104
8/31/2004	1.26	4.21	3.33	48.98	24.36	67.01	83.09	10.712	1.122
9/30/2004	1.10	3.61	3.27	50.60	24.39	67.12	84.61	12.890	1.141
10/31/2004	1.06	3.94	3.70	52.62	24.42	67.24	86.24	12.391	1.161
11/30/2004	1.07	3.83	3.58	45.80	24.46	67.36	87.62	11.063	1.177
12/31/2004	1.09	4.07	3.74	39.03	24.49	67.48	88.83	8.901	1.191
1/31/2005	1.13	4.22	3.75	48.66	24.53	67.61	90.34	10.698	1.209
2/28/2005	1.15	4.24	3.70	44.32	24.56	67.73	91.58	9.688	1.224
3/31/2005	1.10	3.99	3.64	37.95	24.59	67.86	92.75	8.809	1.237
4/30/2005	1.05	4.09	3.89	37.69	24.62	67.98	93.88	8.570	1.250
5/31/2005	1.05	4.03	3.85	44.25	24.66	68.10	95.26	10.215	1.266
6/30/2005	1.07	4.18	3.91	44.26	24.69	68.23	96.58	9.851	1.281
7/31/2005	1.05	3.82	3.65	43.05	24.72	68.35	97.92	10.435	1.297
8/31/2005	1.63	6.52	4.01	45.39	24.77	68.55	99.33	6.491	1.312
9/30/2005	1.75	7.05	4.04	45.12	24.82	68.76	100.68	5.970	1.326
10/31/2005	1.71	7.02	4.11	43.42	24.88	68.98	102.03	5.779	1.339
11/30/2005	1.70	6.98	4.11	39.81	24.93	69.19	103.22	5.331	1.351
12/31/2005	1.70	7.03	4.13	39.55	24.98	69.41	104.45	5.260	1.363
1/31/2006	1.64	6.90	4.20	38.98	25.03	69.62	105.65	5.287	1.375
2/28/2006	1.70	7.17	4.22	37.23	25.08	69.82	106.70	4.856	1.384
3/31/2006	1.66	7.38	4.44	37.38	25.13	70.05	107.86	4.755	1.395
4/30/2006	1.70	6.23	3.67	37.57	25.18	70.24	108.98	5.586	1.406
5/31/2006	1.18	5.25	4.45	38.80	25.22	70.40	110.18	6.947	1.418
6/30/2006	1.21	5.53	4.57	35.10	25.25	70.56	111.24	5.973	1.429
7/31/2006	1.19	5.44	4.56	37.72	25.29	70.73	112.41	6.521	1.440
8/31/2006	1.16	5.51	4.73	37.35	25.33	70.90	113.57	6.389	1.452
9/30/2006	1.23	5.46	4.45	38.09	25.36	71.07	114.71	6.554	1.463
10/31/2006	1.26	5.81	4.62	35.36	25.40	71.25	115.80	5.728	1.473
11/30/2006	1.28	5.83	4.55	35.54	25.44	71.42	116.87	5.728	1.483

Date	Oil Rate (CD) m3/d	Water Rate (CD) m3/d	Water Oil Ratio m3/m3	Water Inj Rate (CD) m3/d	Cum Oil Prod Km3	Cum Water Prod Km3	Cum Water Inj Km3	Voidage Replacement Ratio	Cum Voidage Replacemt Ratio
12/31/2006	1.33	7.04	5.28	35.33	25.48	71.64	117.97	4.759	1.493
1/31/2007	1.38	7.46	5.40	38.69	25.52	71.87	119.16	4.924	1.504
2/28/2007	1.41	7.28	5.15	37.57	25.56	72.08	120.22	4.887	1.513
3/31/2007	1.40	7.36	5.27	36.16	25.61	72.30	121.34	4.655	1.522
4/30/2007	1.38	7.46	5.40	34.49	25.65	72.53	122.37	4.386	1.531
5/31/2007	1.37	7.27	5.32	34.15	25.69	72.75	123.43	4.454	1.539
6/30/2007	1.36	7.36	5.40	35.98	25.73	72.97	124.51	4.642	1.548
7/31/2007	1.34	7.24	5.40	34.98	25.77	73.20	125.59	4.584	1.557
8/31/2007	1.32	7.00	5.31	33.15	25.82	73.42	126.62	4.491	1.566
9/30/2007	1.31	7.25	5.55	33.80	25.85	73.63	127.64	4.429	1.574
10/31/2007	1.16	7.91	6.81	32.36	25.89	73.88	128.64	3.924	1.581
11/30/2007	1.18	7.93	6.74	33.90	25.93	74.12	129.66	4.097	1.589
12/31/2007	1.18	7.61	6.45	33.91	25.96	74.35	130.71	4.263	1.597
1/31/2008	1.20	7.41	6.19	34.19	26.00	74.58	131.77	4.408	1.605
2/29/2008	1.19	7.34	6.15	34.21	26.03	74.79	132.76	4.453	1.613
3/31/2008	1.16	7.53	6.47	33.87	26.07	75.03	133.81	4.304	1.621
4/30/2008	1.17	7.47	6.39	33.95	26.11	75.25	134.83	4.346	1.628
5/31/2008	1.19	7.40	6.21	33.75	26.14	75.48	135.87	4.360	1.636
6/30/2008	1.08	7.52	6.94	31.07	26.17	75.71	136.81	3.969	1.643
7/31/2008	0.74	6.86	9.28	33.58	26.20	75.92	137.85	4.749	1.651
8/31/2008	0.97	7.52	7.77	33.55	26.23	76.15	138.89	4.303	1.659
9/30/2008	1.00	7.61	7.61	33.83	26.26	76.38	139.90	4.283	1.666
10/31/2008	0.98	7.61	7.73	34.25	26.29	76.62	140.96	4.338	1.674
11/30/2008	1.02	7.51	7.39	34.17	26.32	76.84	141.99	4.376	1.681
12/31/2008	0.98	7.39	7.54	33.97	26.35	77.07	143.04	4.425	1.689
1/31/2009	0.96	7.45	7.75	34.15	26.38	77.30	144.10	4.417	1.697
2/28/2009	0.92	7.17	7.79	32.74	26.40	77.50	145.02	4.400	1.703
3/31/2009	0.98	7.48	7.61	34.15	26.43	77.74	146.08	4.395	1.711
4/30/2009	0.98	7.47	7.62	34.09	26.46	77.96	147.10	4.397	1.718
5/31/2009	0.97	7.45	7.65	34.06	26.49	78.19	148.15	4.405	1.726
6/30/2009	0.89	7.38	8.26	33.86	26.52	78.41	149.17	4.432	1.733
7/31/2009	0.89	7.42	8.37	33.82	26.55	78.64	150.22	4.404	1.740
8/31/2009	0.86	7.25	8.44	33.55	26.58	78.87	151.26	4.477	1.748
9/30/2009	0.85	7.22	8.46	33.51	26.60	79.08	152.26	4.490	1.755
10/31/2009	0.89	7.26	8.15	33.74	26.63	79.31	153.31	4.490	1.762
11/30/2009	0.88	7.02	7.95	33.82	26.66	79.52	154.32	4.648	1.769
12/31/2009	0.89	6.74	7.60	33.93	26.68	79.73	155.38	4.850	1.777
1/31/2010	0.87	6.87	7.89	33.96	26.71	79.94	156.43	4.767	1.784
2/28/2010	0.81	6.53	8.05	33.67	26.73	80.12	157.37	4.981	1.791
3/31/2010	0.90	7.06	7.82	33.67	26.76	80.34	158.42	4.599	1.799
4/30/2010	0.78	6.61	8.52	32.55	26.78	80.54	159.39	4.760	1.805
5/31/2010	0.81	6.39	7.92	33.52	26.81	80.74	160.43	5.061	1.813
6/30/2010	0.79	6.36	8.05	30.62	26.83	80.93	161.35	4.646	1.819
7/31/2010	0.78	6.65	8.49	33.06	26.86	81.14	162.38	4.804	1.826
8/31/2010	0.73	6.43	8.82	30.23	26.88	81.34	163.31	4.553	1.833
9/30/2010	0.78	6.95	8.95	33.80	26.90	81.54	164.33	4.708	1.840
10/31/2010	0.56	5.51	9.75	25.88	26.92	81.71	165.13	4.565	1.845
11/30/2010	0.76	7.14	9.44	34.42	26.94	81.93	166.16	4.675	1.852

Date	Oil Rate (CD) m3/d	Water Rate (CD) m3/d	Water Oil Ratio m3/m3	Water Inj Rate (CD) m3/d	Cum Oil Prod Km3	Cum Water Prod Km3	Cum Water Inj Km3	Voidage Replacement Ratio	Cum Voidage Replacemt Ratio
12/31/2010	0.76	6.48	8.47	34.54	26.97	82.13	167.23	5.157	1.860
1/31/2011	0.74	6.68	9.05	34.21	26.99	82.34	168.29	4.960	1.867
2/28/2011	0.79	6.56	8.27	33.05	27.01	82.52	169.22	4.871	1.873
3/31/2011	0.77	6.85	8.88	34.21	27.04	82.73	170.28	4.840	1.880
4/30/2011	0.78	6.63	8.53	33.34	27.06	82.93	171.28	4.866	1.887
5/31/2011	0.74	6.36	8.62	32.36	27.08	83.13	172.28	4.919	1.894
6/30/2011	0.76	6.71	8.87	32.37	27.10	83.33	173.25	4.669	1.900
7/31/2011	0.79	7.28	9.17	30.41	27.13	83.56	174.19	4.049	1.906
8/31/2011	0.74	6.41	8.64	29.78	27.15	83.75	175.12	4.493	1.912
9/30/2011	0.79	5.89	7.50		27.18	83.93	175.12	0.000	1.908
10/31/2011	0.79	6.74	8.51	17.43	27.20	84.14	175.66	2.499	1.909
11/30/2011	0.79	6.75	8.57	25.71	27.22	84.34	176.43	3.685	1.913
12/31/2011	0.80	6.68	8.33	29.54	27.25	84.55	177.35	4.272	1.919